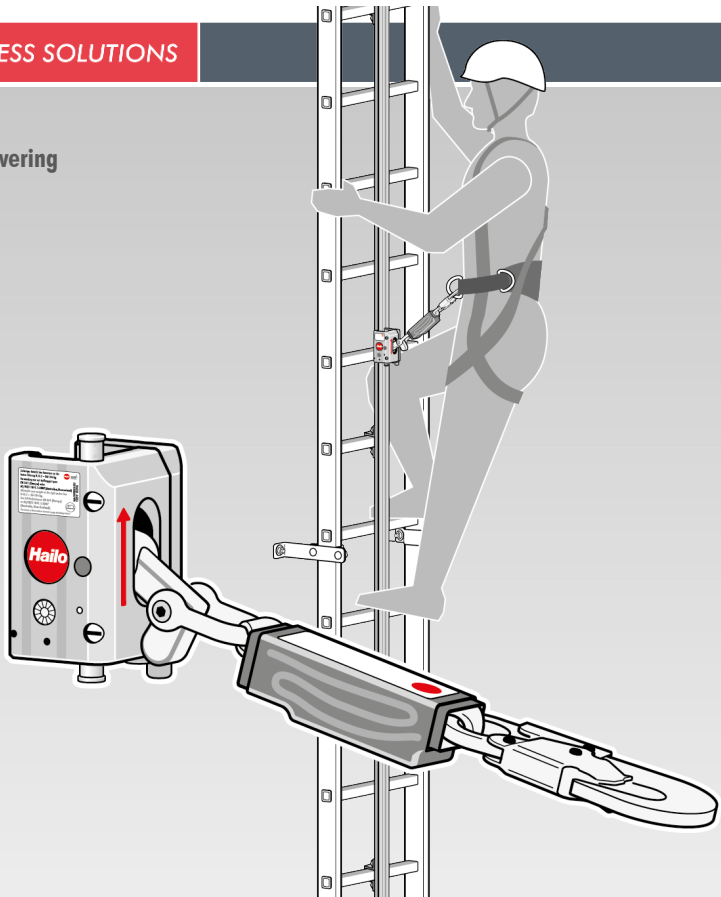


**HIGH LEVEL ACCESS SOLUTIONS**

Information brochure covering

- Assembly
- Use
- Inspection



**Hailo PARTNER H-50.2 fall arrester and  
integrated energy absorbing lanyard BFD-50-136**

**Guided fall arrester  
including fixed guide – System H-50.2**

DIN EN 353-1:2018 · AS/NZS 1891.3:2020 · ANSI Z359.16-2016  
Information brochure - Original document

EN  
2022-11  
1134309  
V02R00

## Legal notice

Contact: Hailo Wind Systems GmbH & Co. KG  
Kalteiche-Ring 18  
D-35708 Haiger  
Germany

Phone: +49 (0) 2773/82-1410

Fax: +49 (0) 2773/82-1561

E-mail: [info@hailo-windsystems.com](mailto:info@hailo-windsystems.com)

Internet: [www.hailo-windsystems.com](http://www.hailo-windsystems.com)

Revision history		Information brochure	Guided fall arrester including fixed guide – System H-50.2
Date	Version	List of changes	

© Hailo Wind Systems – Without the prior written consent of Hailo Wind Systems, no part of this publication may be reproduced in any way, transmitted, transcribed, stored in a storage medium or translated into any language or computer language. Copyright infringement may also affect the product support by Hailo Wind Systems for this equipment. Hailo Wind Systems reserves the right to make changes to this manual and the product it describes without prior notice. The content of this manual does not include any contractual or other obligations by Hailo Wind Systems and is not legally binding. This publication was prepared with great care. However, should you find any errors or wish to make suggestions for improvement, please write to Hailo Wind Systems. The original language of this document is German. If required, you can request a copy in writing.

## Contents

1	System overview .....	5
1.1	Information about the Hailo PARTNER H-50.2 fall arrester + the energy absorbing lanyard BFD-50-136 .....	5
1.2	Information about the user .....	5
2	About This Document.....	6
2.1	Classification of the warnings .....	7
3	General instructions.....	8
3.1	Conformity .....	8
3.2	Warranty and limitations of liability .....	8
3.3	Obligations of the operating company and the user.....	9
4	Safety .....	10
4.1	Intended use.....	10
4.2	Foreseeable misuse .....	11
4.3	Safety instructions.....	12
4.4	Markings and information .....	15
4.5	Markings on the system .....	16
4.6	Safety instructions for use.....	18
4.7	Position of the user on the fall protection rail and fit of the safety harness .....	19
5	Design and function.....	20
6	Operation.....	21
6.1	Daily check .....	21
6.2	Applying and removing the Hailo Partner H-50.2 fall arrester along the access route .....	22
6.3	Entry and exit points of the fall-arrest system .....	24
6.4	Attachment devices .....	25
6.5	Conduct following a fall.....	26
7	Storage and cleaning.....	27
7.1	Storage.....	27
7.2	Cleaning.....	27
8	Inspection and maintenance .....	28
8.1	Notes on inspection and maintenance.....	28
8.2	Checking wear points on the brake lever .....	29
8.3	Inspection plan for recurring inspections of the Hailo PARTNER H-50.2 fall arrester.....	30
8.4	Results .....	31
8.5	Inspection log: Hailo PARTNER H-50.2 .....	34
8.6	Replacement log: energy absorbing lanyard (every 8 years) .....	39

9	Appendix .....	40
9.1	EU-Declaration of Conformity .....	40
9.2	UK Declaration of Conformity .....	41
9.3	EU type examination certificate .....	42

## 1 System overview

### 1.1 Information about the Hailo PARTNER H-50.2 fall arrester + the energy absorbing lanyard BFD-50-136

To be completed by the manufacturer:

<b>Hailo PARTNER H-50.2 fall arrester</b>	Manufacturing number:	
<b>Integrated energy absorbing lanyard BFD-50-136</b>	Production number:	
	Date of expiry:	
<b>Date:</b>		
<b>Manufacturer signature (company stamp):</b>		

### 1.2 Information about the user

To be completed by the user:

<b>Name (user):</b>	
<b>Phone number:</b>	
<b>Company:</b>	
<b>Address:</b>	
<b>Post code:</b>	
<b>Place:</b>	
<b>Date of first use:</b>	
<b>Date:</b>	
<b>User signature:</b>	

## 2 About This Document

### **Preface**

Fall arrester equipment is mandatory in high structures and for access to machinery from a fall height of

- $\geq 5$  m (in accordance with DIN 18799-1)
- $\geq 3$  m (in accordance with EN ISO 14122-4)

or more.

The guided Fall arrester Hailo PARTNER H-50.2 is designed as for use as fall protection when using access ladders and crampons – both above and below floor level.



### **Contents of the information brochure**

### **This information brochure in other languages**

#### **i NOTE**

Please read this information brochure in entirety and observe all safety instructions before using the guided Fall arrester Hailo PARTNER H-50.2 on the H-50.2 fall-arrest system.

This information brochure describes the use and care, as well as the maintenance and inspection of the Hailo PARTNER H-50.2 fall-arrest system.

If the guided Fall arrester Hailo PARTNER H-50.2 is resold to a buyer in another country, it is necessary for the safety of the user that this information brochure be made available in the respective national language.

#### **i NOTE**

The designations in this brochure and all related documents are used in accordance with DIN EN 353-1:2018, and “Guided type fall arrester including fixed guide” and “Fixed guide” have been replaced by “Fall-arrest system” and “Fall protection rail” for a better user understanding.

## 2.1 Classification of the warnings

### **Classification of the warnings**

Warnings are introduced by signal words that express the extent of the hazard:

#### **DANGER**

DANGER indicates an imminently threatening dangerous situation which could lead to serious injuries or death if not avoided.

#### **WARNING**

WARNING indicates a potentially dangerous situation which could lead to serious injuries or death if not avoided.

#### **CAUTION**

CAUTION indicates a potentially dangerous situation which could lead to minor injuries if not avoided.

#### **ATTENTION**

ATTENTION indicates a possible dangerous situation which could lead to property damage if not avoided.

#### **NOTE**

This symbol is used to draw your attention to important, useful or helpful information.

### **Presentation of important information:**

# General instructions

## 3 General instructions

### 3.1 Conformity

***Declaration of conformity***

The Hailo PARTNER H-50.2 fall arrester complies with the requirements of the applicable European Regulation (EU) 2016/425 on personal protective equipment to prevent falls from a height.

The full EU Declaration of Conformity can be found in the appendix.

***EU type examination***

The EU type examination for the Hailo PARTNER H-50.2 fall arrester was issued by a notified European body (see certificate in the appendix).

***Inspection in accordance with ANSI***

The inspection for the United States of America in accordance with ANSI was performed by INTEREK, 3933 US Route 11, Cortland, New York.

***UKCA***

The full UK Declaration of Conformity can be found in the appendix.

### 3.2 Warranty and limitations of liability

***Warranty***

The manufacturer's warranty for the Hailo PARTNER H-50.2 guided fall arrester applies for 1 year when the technical documentation (operating instructions) is observed.

***Limitation of liability***

Infringements against the provisions presented here will render any warranty claims made to Hailo Wind Systems null and void.

Hailo Wind Systems is not liable for damage that results from violations of the provisions described here.



## 3.3 Obligations of the operating company and the user

### NOTE

The term “operating company” is used in this information brochure for the party that assumes the authority and responsibility for this system – usually a company or corporation.

The term “user” refers to the person who uses the fall-arrest system.

#### ***Responsibility of the operating company and the user***

It is the responsibility of the operating company to ensure that this information brochure can be provided to the user at any time.

It is the responsibility of the operating company to ensure that the fall-arrest system is correctly installed, used and maintained, and this work is only carried out by persons trained accordingly for these tasks.

It is the responsibility of the operating company to provide a plan that factors in all potential emergencies – ones that can occur during use of the fall-arrest system – and explains all rescue measures necessary.

It is the responsibility of the user to use the fall-arrest system in compliance with all safety instructions and procedures in this information brochure, and in compliance with all other safety precautions in the wind turbine generator.

It is the responsibility of the user to be informed of any side effects caused by taking medication and which can impair the user or lead to physical harm when accessing the system.

The user must be mentally and physically able to access the respective system.

#### ***User of the fall-arrest system***

Persons whose professional training, experience and knowledge of the relevant regulations enables them to carry out the tasks assigned to them and independently recognise and avoid possible dangers.

#### ***Number of personnel required***

At least two qualified persons must be present when using the fall-arrest system. The persons in and on the system must be able to make an emergency call at all times.

#### ***Regulations***

The Accident Prevention Regulations BGV A1 and BG Rules BGR/GUV 198/199 must be observed.

## 4 Safety

### 4.1 Intended use

The H-50.2 fall-arrest system complies with the strictest safety requirements. It has been inspected and certified in accordance with European and other international regulations.

The guided Fall arrester Hailo PARTNER H-50.2 may only be used for the intended use described here.

- The Fall arrester Hailo PARTNER H-50.2 has been inspected and approved together with the Hailo H-50.2 fall-arrest system.
- The guided Fall arrester Hailo PARTNER H-50.2 may only be used for the ascent or descent of the H-50.2 fall-arrest system. Any other use is expressly prohibited, as this may cause damage to and therefore failure of the Hailo PARTNER H-50.2 fall arrester in the event of a fall.
- The Fall arrester Hailo PARTNER H-50.2 should remain the personal property of the respective person and only be used by this user.  
Use by an extended group of persons cannot be considered advisable.
- Following ascent and descent, the Fall arrester Hailo PARTNER H-50.2 must be removed from the fall protection rail again.
- All dates and intervals for inspections and maintenance must be observed.
- Local, regional and national provisions and regulations must be observed and complied with.

The safety function of the H-50.2 fall-arrest system with a Hailo PARTNER H-50.2 fall arrester may be impaired by the use of climb assist systems (motor-driven or by means of a counterweight).

The operating company and the company that combines both systems (climb assist system with H-50.2 fall-arrest system) is responsible for ensuring use as intended.

Unrestricted safety and functionality of the H-50.2 fall-arrest system in combination with the respective climb assist system must be guaranteed and documented.



### **WARNING!**

#### **Impairment of the safety function due to the use of climb assist systems**

Having a functional inspection performed by a notified inspection laboratory and certified by the subsequent issue of a declaration of no objection is mandatory.

## 4.2 Foreseeable misuse



### **DANGER!**

#### **Danger of falling due to disregarding specifications!**

The specifications for safe use of the Hailo PARTNER H-50.2 fall arrester must be observed.

The Hailo PARTNER H-50.2 fall arrester may not be used:

- on systems made by other manufacturers.
- in the event of lack of awareness or non-observance of this information brochure.
- by insufficiently qualified personnel.
- for workplace positioning. If workplace positioning is required, a separate system must be used.
- in extreme climate conditions, exposure to chemicals or mechanical influences on the fall-arrest system (e.g. oil, thick ice, heavy soiling, sharp edges etc.)
- outside the permitted temperature range.
- when connecting elements of the fall arrester were extended or shortened.
- when using positioning belts, seat belts, elastic belts or older Form B safety harnesses that only partially enclose the body.
- when the fall arrester is connected to any additional positioning rings present on the side of the safety harness.
- with system components made by other manufacturers.  
Use in combination with components made by other manufacturers is not permitted. If use of other components cannot be avoided, this requires the written permission of Hailo Wind Systems.
- in the event of modifications or use of third-party parts on the fall arrester without the written permission of the manufacturer.
- in the event of inadequate maintenance and care or neglect of timely inspection of the fall arrester.



### **NOTE**

No liability will be assumed for harm to persons or damage to equipment arising from violation of the provisions stipulated here or failure to observe the safety instructions.

## 4.3 Safety instructions



### IMPORTANT!

**Failure to follow these instructions may result in property damage.**

Therefore:

- Before using the Hailo PARTNER H-50.2 guided fall arrester, read the information on assembly, use, and maintenance and inspection in this information brochure carefully and in entirety.
- The Hailo PARTNER H-50.2 guided fall arrester may only be used on the Hailo H-50.2 fall-arrest system.
- Pay particular attention to the safety instructions.



### IMPORTANT!

#### **Wear personal fall protection equipment!**

Protection against falls from above a minimum height.

- The personal fall protection equipment must be properly selected, used and checked.
- Personal fall protection equipment may only be used for the intended purpose and by persons who have been instructed on how to use it safely and have the corresponding knowledge!
- Only safety harnesses in accordance with EN 361 (Europe) and AS/NZS 1891.1:2007 (Australia/New Zealand) are permitted in combination with the Hailo PARTNER H-50.2 fall arrester on the H-50.2 fall-arrest system.
- If a combination of equipment components is used (e.g. connection of user-specific safety harnesses to the Hailo PARTNER H-50.2 guided fall arrester), it is imperative that this does not lead to impairment of the overall system. Impairment can lead to failure of the fall arrester in the event of a fall.



#### **Carry communication equipment with you (mobile phone, radio unit)**

When in or on the wind turbine generator, constant voice contact must be ensured between the people involved. Ensure contact between persons using mobile phones or radios.



#### **Wear a helmet**

Head protection from falling objects and impacts from falls or in confined spaces.



## IMPORTANT!



### Wear safety footwear

Foot protection from heavy falling objects, slipping, or stepping on sharp-edged parts that are lying around.



### Wear safety gloves

Hand protection against friction, abrasions, stabs and cuts.



## IMPORTANT!

### Dates and intervals for inspection and maintenance

- The specified intervals for recurring inspections/maintenance must be adhered to!
- The proper condition of the access equipment and the attachment points must be checked at least once a year by a competent and qualified person.
- The check list for the inspection can be found in the appendix to these instructions.



## DANGER!

Disregarding the safety instructions may result in a fall and therefore lead to serious injury or death.

Therefore:

- The fall-arrest system must be inspected for damage by an expert or authorised person (see the H-50.2 fall-arrest system information brochure).
- The result of this inspection must ascertain the safe condition and safe function of the system beyond any doubt.
- If this is not the case, the corresponding repair measures must be performed correctly.
- The use of the Hailo PARTNER H-50.2 guided fall arrester on systems made by other manufacturers is not permitted, and non-observance can result in failure.
- Observe the accident prevention regulations BGV A1 as well as the BG Rules BGR/GUV-R 198/199.



## **DANGER!**

**Improper operation may cause serious injury or property damage.**

Therefore:

- Before using the H-50.2 fall-arrest system each time, perform a functional check of the Hailo PARTNER H-50.2 fall arrester using this information brochure.
- A maximum of 10 persons may use the fall-arrest system at the same time. The minimum interval between the individuals must total 6 m.  
Less than the minimum interval between persons is permitted in the event of an emergency or rescue.
- The Hailo PARTNER H-50.2 guided fall arrester is approved for a total weight (body weight of the user including clothing and equipment) of 50 to 136 kg.
- The fall protection rail (material: aluminium) may only deviate from the vertical by 3° – 15°.
- When using the H-50.2 fall-arrest system near moving machinery and electrical systems, more caution is required.



## **WARNING!**

**Property damage possible due to non-compliance with safety instructions.**

There are a total of 4 magnets installed in the housing of the Hailo Partner H-50.2 fall arrester. Magnets can impact the function of pacemakers and implantable defibrillators.

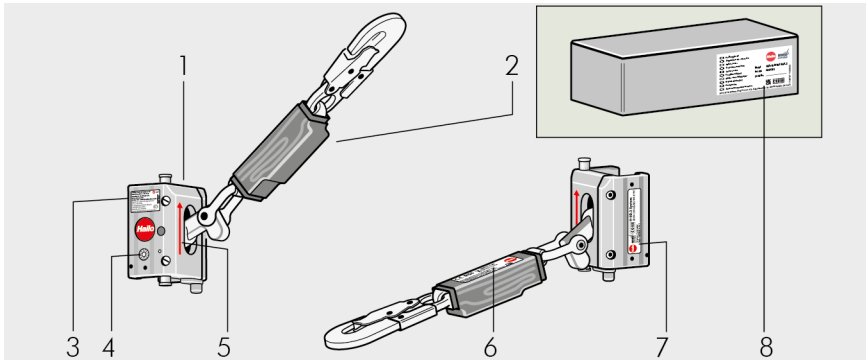


## **WARNING!**

**Personal injury possible due to non-compliance with safety instructions.**

Careless handling could cause fingers or skin to be crushed between housing sections.

## 4.4 Markings and information



**Zul. Gewicht des Benutzers**  
**an fester Führung H-50.2 = 50-136 kg**  
*Allowable user weight*  
**on rigid anchor line H-50.2: 50-136 kg**

**Verwendung nur mit Auffanggurt gem.**  
*Use full-body-harness acc. to*

**EN 361 (Europa / Europa)**  
**AS/NZS 1891.1:2007 (Australia, New Zealand)**  
**OSHA/ANSI (North America).**

*This device is fitted with an internal energy absorbing device!*  
*Inspect before each use! Follow manufacturer's instructions included at time of shipment! Do not load or grasp the carrier or carrier sleeve while actively climbing!*

Hailo PARTNER H-50.2  
 1132519 - 1/2/2019

Hailo Wind Systems GmbH & Co.KG, Kalteiche-Ring 18, 35708 Haiger, Germany

**CE 0158** Typ: BFD-50-136 HWS  
 DIN EN 353-1:2018

Herstellungsjahr / year of manufacture: XXXX  
 Herstellungsnummer / Factory Number: 00001  
 Verwendung / use: max. 8 Jahre / 8 years siehe / see

<b>DE</b>	<b>Auffängergerät</b>
<b>ES</b>	<b>Dispositivo de retención</b>
<b>EN</b>	<b>Fall Arrester</b>
<b>FR</b>	<b>Protection antichute</b>
<b>FI</b>	<b>Liukutarrain</b>
<b>NL</b>	<b>Vangbeveiliging</b>
<b>NO</b>	<b>Glider med falldemper</b>
<b>PL</b>	<b>Wózek blokujący</b>
<b>PT</b>	<b>Antiquedada</b>
<b>RU</b>	<b>Подхватывающий гаситель</b>

**Hailo WIND SYSTEMS**

**Model** Hailo PARTNER H-50.2  
**Art. No.** 6026301  
**Serial-No.** \_\_\_\_\_

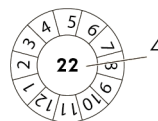
**UK CA CE 0158**

1133729 • 10/2022

Hailo Wind Systems GmbH & Co. KG, Kalteiche-Ring 18, 35708 Haiger, Germany

**Hailo WIND SYSTEMS** **CE 0158** **H-50.2 System** DIN EN 353-1:2018 AS/NZS 1891.3:2020 ANSI Z359.16-2016

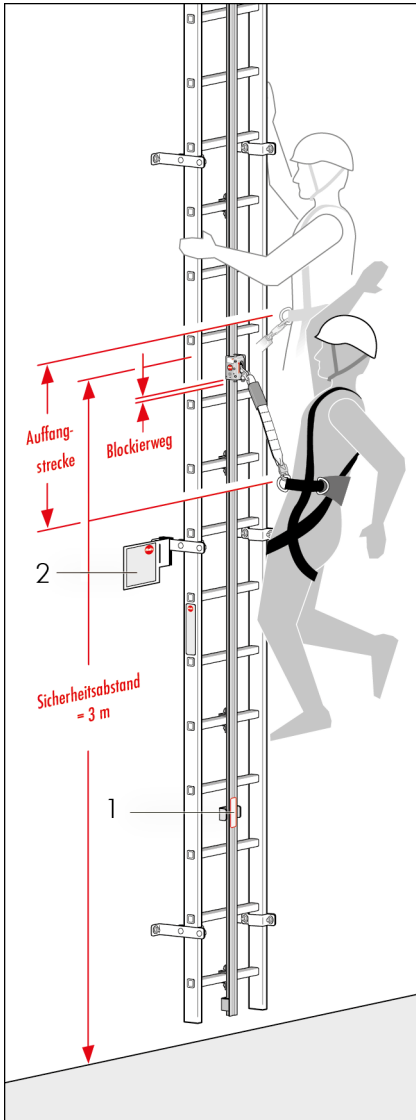
Fall arrester / Serial number  
 Hailo PARTNER H-50.2



- 1 Hailo Partner H-50.2 fall arrester
- 2 Energy absorbing lanyard BFD-50-136
- 3 Safety instruction
- 4 Inspection tag
- 5 Note on positioning at the top
- 6 Energy absorbing lanyard BFD-50-136 nameplate
- 7 Hailo Partner H-50.2 fall arrester nameplate
- 8 Packaging label

Please pay particular attention to all markings, stickers with safety instructions and safety regulations!

## 4.5 Markings on the system



**H-50.2 System** 

**Zugelassenes Auffanggerät:**  
Approved fall arrester:



**Hailo PARTNER H-50.2**

**Auffanggeräte des H-50 Systems sowie Auffanggeräte anderer Hersteller sind nicht zulässig!**  
Fall arresters of the H-50 system and fall arresters from other manufacturers are not permitted!



**SPL-50-R3**



**Hailo PARTNER R1**  
1122999 · 06/2021



**SPL-50-PRO**

- Optional sticker  
Note about non-approved fall arresters (maximum installation height = 3 m from the access level (base))





## WARNING!

### Failure of the protective function of the fall arrester

Observe the safety interval specified from the top edge of the access level.

Fall-arrest system marking (nameplate) that indicates which fall arrester must be used on the fall-arrest system.

The safety interval is calculated using the performance data and the area necessary to suspend a person in the event of a fall.

The safety interval is < 3 metres from the top edge of the access level.



## NOTE

The operating company using the system must affix a corresponding warning notice [2] to the structure which explains the safety interval to the user beyond any doubt.

### H-50.2 System gemäß DIN EN 353-1:2018, ANSI Z359.16-2016 und AS/NZS 1891.3:2020

Darf ausschließlich mit dem Auffanggerät Hailo PARTNER H-50.2 in Verbindung mit Auffanggurten nach EN 361 (Europe), OSHA/ANSI (Nordamerika) oder AS/NZS 1891.1:2007 (Australien, Neuseeland) genutzt werden.

- Achtung!**
- Die Schutzwirkung des Auffanggerätes ist ab 3 m Steighöhe über Zugangsebene gegeben! (Sicherheitsabstand = 3 m)
  - Zwischen 2 steigenden Personen ist ein Abstand von mindestens 6 m einzuhalten.
  - Max. 10 Personen dürfen das System gleichzeitig benutzen.

CE 0158

### H-50.2 System according to DIN EN 353-1:2018, ANSI Z359.16-2016 and AS/NZS 1891.3:2020

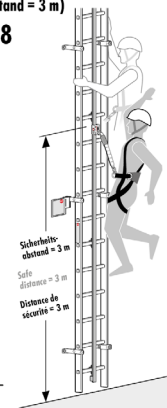
May only be used with fall arrester Hailo PARTNER H-50.2 in conjunction with EN 361 (Europe), OSHA/ANSI (North America) or AS/NZS 1891.1:2007 (Australia, New Zealand) compliant safety harness.

- ATTENTION!**
- The safety harness provides protection from a height of 3 m above the access level! (Safety margin = 3 m)
  - There should always be a gap of at least 6 m between any two people on the fall arrest system.
  - No more than 10 persons may use the system at the same time.

### H-50.2 Système conforme à DIN EN 353-1:2018, ANSI Z359.16-2016 et AS/NZS 1891.3:2020

Doit être utilisé exclusivement avec l'antichute Hailo PARTNER H-50.2 et avec des harnais de sécurité selon EN 361 (Europe), OSHA/ANSI (Amérique du Nord) ou AS/NZS 1891.1:2007 (Australie, Nouvelle-Zélande).

- Attention!**
- L'effet protecteur de l'antichute n'est réalisé qu'à partir de 3 m de hauteur au-dessus du niveau d'accès! (distance de sécurité = 3 m)
  - Entre deux personnes utilisant l'accès, une distance d'au minimum 6 m doit être respectée.
  - 10 personnes au maximum peuvent utiliser en même temps le système.



#### Informationsbroschüre beachten!

Follow manufacturer's instructions included at time of shipment!

Lire attentivement le manuel d'information!



#### Zutreffendes bei der Montage

eintragen bzw. ankreuzen.

For assembly, enter or tick as applicable.

Pour le montage, entrez ou pointez selon le cas.

Montiert  
Assembled  
Monté



Nächste Prüfung  
Next inspection  
Prochaine inspection

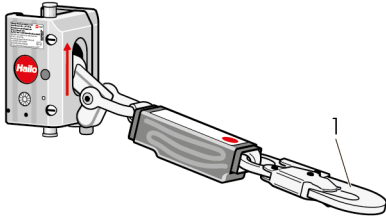


Hailo Wind Systems GmbH & Co. KG  
Kaltteiche-Ring 18  
35708 Haiger, Germany  
www.hailo-wind-systems.com

1133759 • 04/2022 • DE-EN-FR

## 2 Nameplate sticker with warning notice about safety interval

## 4.6 Safety instructions for use



The Hailo Partner H-50.2 fall arrester is designed for use in a temperature range of  $-40^{\circ}\text{C}$  to  $+60^{\circ}\text{C}$ .

Any other extreme climate conditions, for example temperatures

$< -40^{\circ}\text{C}$  and  $> +60^{\circ}\text{C}$ ,

ice, snow or water can impair the function of the fall arrester.

Use of the fall-arrest system is not permitted in this case.

No connecting elements on the fall arrester may be extended or shortened.

Only safety harnesses in accordance with

- EN 361 (for Europe)
- AS/NZS 1891.1:2007 (for Australia and New Zealand)
- OSHA/ANSI (for North America)

are permitted in combination with the Hailo PARTNER H-50.2 fall arrester on the fall-arrest system.

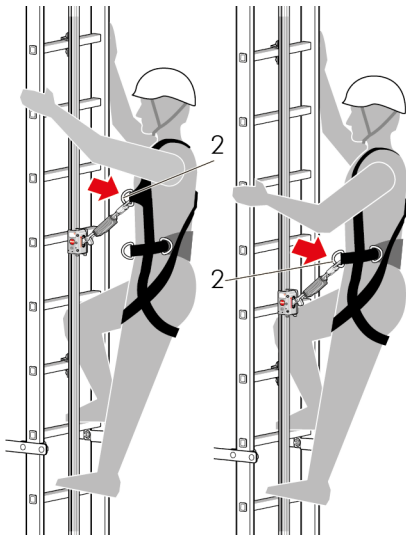
### **i** NOTE

Observe the user manual for the safety harnesses.

Do not use half belts, seat belts, elastic belts or older Form B safety harnesses that only partially enclose the body.

The snap hook [1] for the energy absorbing lanyard may only be hooked into an approved fall arrest ring [2].

The fall arrester may not be connected to the positioning rings present on the side of the safety harness that may represent an additional element near the hip.



## 4.7 Position of the user on the fall protection rail and fit of the safety harness

### Position on the fall protection rail



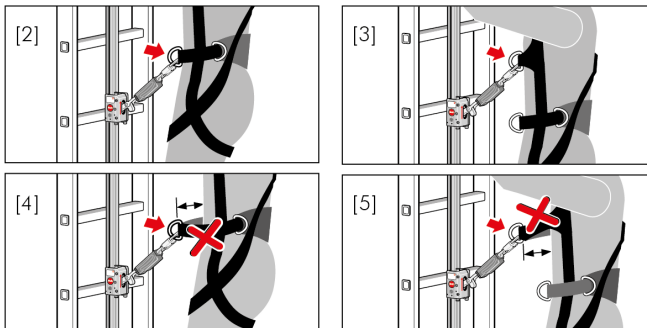
### **WARNING!**

#### Danger of falling

There is a risk of falling if the user is incorrectly positioned on the fall protection rail.

Avoid a position on the fall protection rail directly above the fall arrester (see Fig. 1).

### Safety harness fit



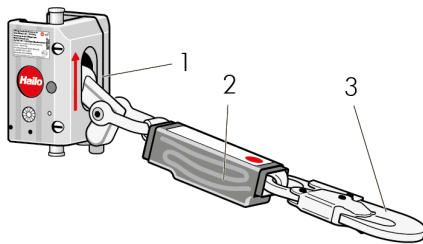
### **WARNING!**

#### Danger of injury

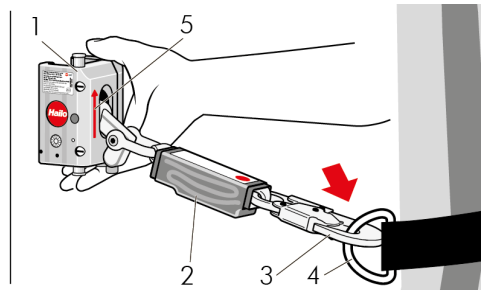
A loose safety harness that has not been fitted tight to the body (Fig. 4+5) may cause injury to the user when using the fall-arrest system.

Ensure that the safety harness fits the body tightly and has been fitted correctly (see Fig. 2+3).

## 5 Design and function



**Art.-Nr.: 6026301**



- 1 Hailo Partner H-50.2 fall arrester
- 2 Energy absorbing lanyard BFD-50-136
- 3 Snap hook
- 4 Fall arrest ring on the safety harness
- 5 Direction of pull (red arrow)

The Hailo Partner H-50.2 fall arrester complies with the regulations in accordance with:

- DIN EN 353-1;2018
- AS/NZS 19891.3:2020
- ANSI Z359.16-2016

The fall arrester is used on the fall protection rail of the H-50.2 fall-arrest system as reliable fall arrester equipment.

The self-locking mechanism in the event of a fall, along with a smooth glide along the fall protection rail, ensures a safe ascent and descent without hindering the user.

The fall arrester is equipped with an energy absorbing lanyard BFD-50-136 [2].

The integrated snap hook [3] on the energy absorbing lanyard [2] must be hooked into the fall arrest ring [4] on the safety harness that was applied beforehand (in accordance with EN 361 for Europe, AS/NZS 1891.1:2007 for Australia/New Zealand or OSHA/ANSI for North America).

In the event of a fall, the energy absorbing lanyard reduces the impact on the user's body to a value below 6 kN. (for ANSI: maximum impact force = 8 kN, average impact force = 6 kN).

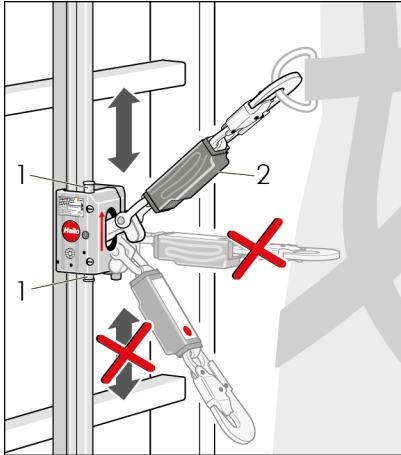
The fall arrester may only be used on the fall protection rail in the correct direction of pull (red arrow pointing upwards) [5].

The fall arrester is designed to prevent incorrect use.

## 6 Operation

### 6.1 Daily check

Prior to use, the fall arrester must complete a daily check. Proceed as follows to do so:



- 1 Release button
- 2 Energy absorbing lanyard BFD-50-136

1. ► Perform a visual inspection. If there are signs of thick ice or soiling on the fall-arrest system, use of the system is not permitted.
2. ► Check whether the release buttons (1) are closed.
3. ► Check that the energy absorbing lanyard [2] moves without obstruction.
4. ► Pull the fall arrester upwards by the snap hook.
  - ⇒ The fall arrester must release from the clamp and move upwards and downwards with ease.
5. ► Let go of the fall arrester.
  - ⇒ The fall arrester clamps to the fall protection rail within 30 mm without slipping.

After successfully completing the daily check, the fall arrester is ready for use.



### **WARNING!**

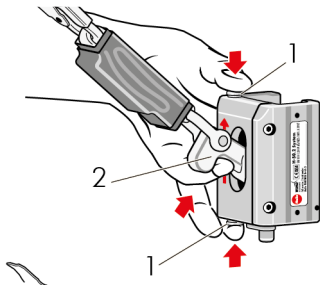
#### **Danger of falling**

If there are any doubts that use will be safe, then the fall arrester must be withdrawn from further use with immediate effect.

## 6.2 Applying and removing the Hailo Partner H-50.2 fall arrester along the access route

The fall arrester can be applied directly to the fall protection rail along the access route. The fall arrester must be operated using both hands when doing so.

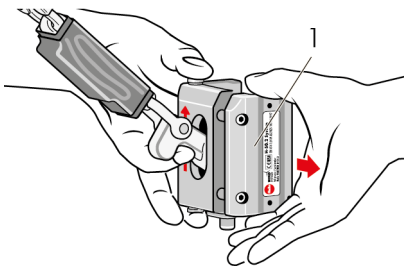
### Releasing the fall arrester



- 1 Release button
- 2 Energy absorbing lanyard BFD-50-136

1. ► Take the fall arrester in your left hand.
2. ► Press the release buttons [1] with your thumbs and index fingers.
3. ► At the same time, raise the brake lever [2] using the little finger of your left hand.  
⇒ The brake level is in the open position (continuous run position)

### Opening the fall arrester



- 1 Slider

1. ► Pull the slider [1] outwards with your right hand.  
⇒ The magnets in the housing require the slider to be pulled back using some force.

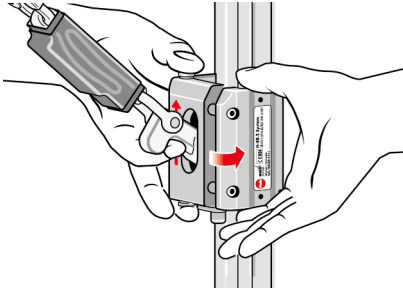


### IMPORTANT!

#### Impairment of the function of the fall arrester due to soiling

Note any soiling attracted by the magnets when opening and closing the fall arrester, and remove it, if applicable.

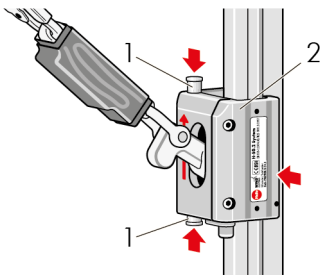
## Attaching the fall arrester



1. ▶ Attach the fall arrester to the fall protection rail from the left first, and then on the right side.

1 Slider

## Locking and inspecting the fall arrester



1. ▶ Close the slider [2].
2. ▶ Let go of both release buttons [1].
3. ▶ Check that the fall arrester is correctly positioned, closed and locked.

⇒ The fall arrester is ready for use.

1 Release button

2 Slider

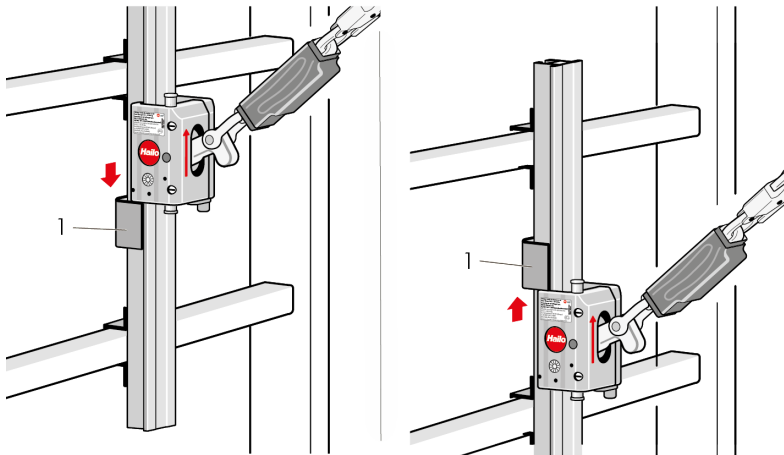
## Removing the fall arrester from the fall protection rail

1. ▶ The fall arrester is removed from the fall protection rail in the reverse sequence.
2. ▶ Remove it from the right side of the fall protection rail profile.

## Conduct during ascent and descent

1. ▶ Do not operate or touch the guided fall arrester during ascent or descent.  
⇒ The braking function of the fall arrester may be impaired or prevented.
2. ▶ Only operate or grasp the guided fall arrester during ascent or descent from a safe position without risking a fall.

## 6.3 Entry and exit points of the fall-arrest system



1 End stop at the entry and exit points



### WARNING!

#### Danger of falling due to the fall arrester sliding out of the fall protection rail

Each position on the fall-arrest system at which the fall arrester can unintentionally slide out of the fall protection rail must be secured using an end stop.

All entry and exit points must be accessible from a safe position.

Upon entry and exit from the fall-arrest system, secure yourself to an approved attachment point (in accordance with EN 795).

There are entry and exit points at the beginning and end of the access route, as well as at the platforms along the fall-arrest system in accordance with local circumstances.

There is an end stop [1] at the entry and exit points at the beginning and end of the access route. The end stops prevent the fall arrester from unintentionally sliding out of the fall protection rail.

#### **Additional shock absorbers: e.g. when exiting the H-50.2 fall-arrest system**

- The lengths of the connections to additional safety systems must be kept as short as possible to limit the fall height accordingly in the event of a fall.
- Additional shock absorbers, e.g. Y-connectors, may only be secured to the intended attachment points (in accordance with EN 795).



## 6.4 Attachment devices

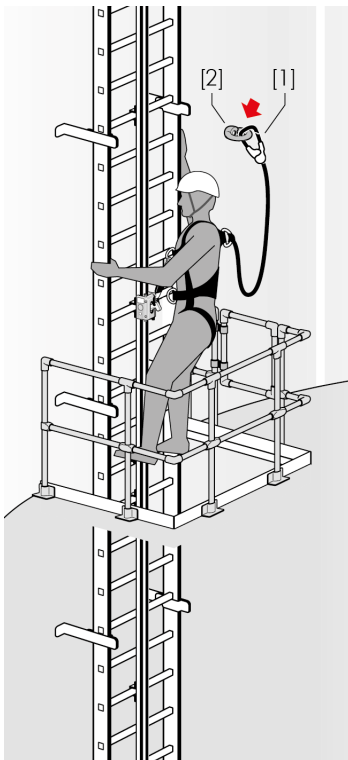


### WARNING!

**Danger of falling due to unsecured entry into the fall-arrest system or when exiting the fall-arrest system.**

Secure yourself against falling to an approved attachment point in accordance with the local circumstances.

To do so, the snap hook [1] of the shock absorber (in accordance with EN 363) is hooked into either an approved attachment point [2] (in accordance with EN 795) on the building or another structure.



- 1 Snap hook
- 2 Attachment point

The system operator is responsible for a sufficient number of attachment points.

- The position of attachment points and attachment devices using within an access system must be chosen so that the freefall and the fall height are kept to a minimum.
- The attachment point must be within the radius of action of the user still secured to the fall-arrest system.

1. ► Only choose attachment devices or attachment points that are above you
2. ► Check potential attachment points and attachment devices prior to each use.

## 6.5 Conduct following a fall

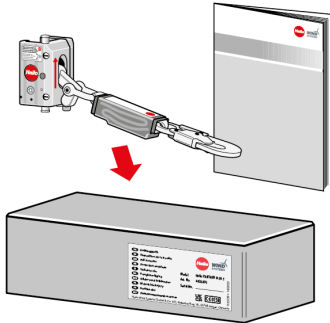
In the potential event of a fall, start by taking the measures necessary in accordance with the system operator's emergency plan.

A system or a component subject to a fall is no longer approved for further use.

- Repair work on the Hailo PARTNER H-50.2 fall arrester may only be performed by the manufacturer.
- By principle, send the Hailo PARTNER H-50.2 fall arrester to the manufacturer for an inspection or for repair.
- Only original parts may be used on the Hailo PARTNER H-50.2 fall arrester. Defective or worn parts may only be replaced with Hailo Wind Systems spare parts.
- The fixed guide (fall protection rail H-50.2) must be inspected by an expert/qualified person prior to further use.

## 7 Storage and cleaning

### 7.1 Storage



Either the packaging provided or a suitable container can be used for storage and transport of the Hailo Partner H-50.2 fall arrester.

#### **DANGER!**

#### **Danger of falling due to improper storage or transport**

Store the Hailo Partner H-50.2 fall arrester in a dry place that is accessible for the user.

Avoid the following:

- Temperatures of  $<-40^{\circ}\text{C}$  or  $>+60^{\circ}\text{C}$
- Contact with oils, acids or other corrosive liquids

### 7.2 Cleaning

If the fall arrester unintentionally becomes soiled, e.g. with concrete dust, sand, earth or other substances, clean the fall arrester as follows:

1. ► Clean the fall arrester using warm water (max.  $40^{\circ}\text{C}$ ) and an acid-free detergent.
2. ► Dry the fall arrester in the air.

⇒ This can, if necessary, be expedited using compressed air (carefully blow dry).



#### **NOTE**

Other methods of cleaning the fall arrester that are not permitted may cause failure of the fall-arrest system in the event of a fall.

Drying the fall arrester under or on sources of heat is not permitted.

If in doubt, consult the manufacturer.

## 8 Inspection and maintenance

### 8.1 Notes on inspection and maintenance

Fall arresters in accordance with

- DIN EN 353.1:2018
- AS/NZS 1891.3:2020
- ANSI Z539.16-2016

must be checked by the manufacturer or an expert/qualified person for proper condition and functionality at least once a year.



#### NOTE

##### **An expert/qualified person is:**

A person who, due to technical training (see DGUV 312-906 / TRBS 1203) and personal experience, has the knowledge required for this safety system.

An expert/qualified person is familiar with the generally accepted rules of technology and with the relevant guidelines and regulations and can therefore assess a condition safe for use and proper use.

This recurring inspection and maintenance of the Hailo Partner H-50.2 fall arrester must be conducted in accordance with the inspection and maintenance plan listed. (see Inspection plan for recurring inspections of the Hailo PARTNER H-50.2 fall arrester., Page 30)

In addition, a recurring inspection according to the environmental conditions that prevail respectively must be carried out.

This may result in inspection and maintenance intervals that are correspondingly shorter.

If a fall occurs, the Fall arrester Hailo PARTNER H-50.2 must be checked by the manufacturer before further use with immediate effect.

Repairs may only be performed by the manufacturer.

The maximum usage period for the energy absorbing lanyard integrated into the Hailo PARTNER H-50.2 fall arrester totals 8 years. After this, the fall arrester must be equipped with a new energy absorbing lanyard.

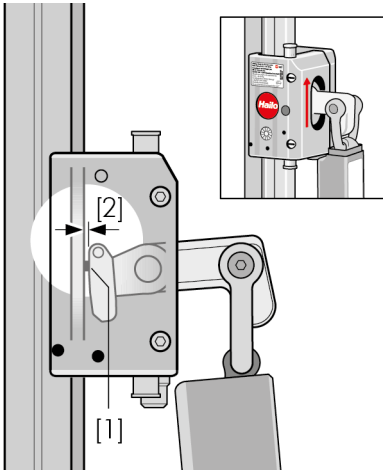
Only the manufacturer may fit the new equipment.

The results of the inspection and maintenance must be documented in the inspection log.

## 8.2 Checking wear points on the brake lever

During the recurring inspection of the Fall arrester Hailo PARTNER H-50.2 (see Inspection plan for recurring inspections of the Hailo PARTNER H-50.2 fall arrester., Page 30), both wear points [1] on the brake surface must be inspected as follows:

### Releasing the fall arrester



1. ▶ Secure the Fall arrester Hailo PARTNER H-50.2 on the fall protection rail.
2. ▶ Use a feeler gauge to check the thickness of the wear points [2] on the brake surface.
  - ⇒ If the value determined is  $\leq 0.05$  mm, the brake lever must be replaced.

### **IMPORTANT!**

Only the manufacturer may replace the brake lever.

- 1 Wear point
- 2 Thickness of the wear points

## Inspection and maintenance

<b>8.3 Inspection plan for recurring inspections of the Hailo PARTNER H-50.2 fall arrester.</b>	
	Inspection
	Date (month/year)
	Result
1. Hailo Partner H-50.2 fall arrester	General condition, check for damage, corrosion, soiling
2. Fall arrester housing	Technical condition
3. Slider on the right	Technical condition, function
4. Guide rollers	Ease of motion, technical condition
5. Twist lock pin	Technical condition
6. Brake lever	Ease of movement, functional surfaces, technical condition
7. Brake lever (wear points)	Inspection of the thickness, min. >0.05 mm
8. Brake lever (return spring)	Effect, condition
9. Screw connections	Technical condition, preload force
10. Cylindrical pin (brake lever)	Fit, condition
11. Magnets	Technical condition (corrosion, soiling)
12. Shackle	Pin retainer (adhesive)
13. Transverse axes	Function, ease of movement
14. Release mechanism	Function, ease of movement
15. Energy absorbing lanyard BFD-50-136	Condition, seams, shoulder strap (blue belt)
16. Energy absorbing lanyard BFD-50-136	Condition and shrink sleeve packaging
17. Snap hooks	Condition, function, hook safety
18. Original markings	Series number, type specification etc. easy to read
19. Fall arrester functional test	Use on the fall-arrest system
20. Usage period of the BFD-50-136	Usage period elapsed?
21. Hailo PARTNER H-50.2 fall arrester inspection tag	Inspection tag issued

# Inspection and maintenance

## 8.4 Results

1. Inspection		2. Inspection		3. Inspection		4. Inspection		5. Inspection	
/		/		/		/		/	
OK	Not OK	OK	Not OK	OK	Not OK	OK	Not OK	OK	Not OK
<input type="checkbox"/>	<input type="checkbox"/>	<input type="checkbox"/>	<input type="checkbox"/>	<input type="checkbox"/>	<input type="checkbox"/>	<input type="checkbox"/>	<input type="checkbox"/>	<input type="checkbox"/>	<input type="checkbox"/>
<input type="checkbox"/>	<input type="checkbox"/>	<input type="checkbox"/>	<input type="checkbox"/>	<input type="checkbox"/>	<input type="checkbox"/>	<input type="checkbox"/>	<input type="checkbox"/>	<input type="checkbox"/>	<input type="checkbox"/>
<input type="checkbox"/>	<input type="checkbox"/>	<input type="checkbox"/>	<input type="checkbox"/>	<input type="checkbox"/>	<input type="checkbox"/>	<input type="checkbox"/>	<input type="checkbox"/>	<input type="checkbox"/>	<input type="checkbox"/>
<input type="checkbox"/>	<input type="checkbox"/>	<input type="checkbox"/>	<input type="checkbox"/>	<input type="checkbox"/>	<input type="checkbox"/>	<input type="checkbox"/>	<input type="checkbox"/>	<input type="checkbox"/>	<input type="checkbox"/>
<input type="checkbox"/>	<input type="checkbox"/>	<input type="checkbox"/>	<input type="checkbox"/>	<input type="checkbox"/>	<input type="checkbox"/>	<input type="checkbox"/>	<input type="checkbox"/>	<input type="checkbox"/>	<input type="checkbox"/>
<input type="checkbox"/>	<input type="checkbox"/>	<input type="checkbox"/>	<input type="checkbox"/>	<input type="checkbox"/>	<input type="checkbox"/>	<input type="checkbox"/>	<input type="checkbox"/>	<input type="checkbox"/>	<input type="checkbox"/>
<input type="checkbox"/>	<input type="checkbox"/>	<input type="checkbox"/>	<input type="checkbox"/>	<input type="checkbox"/>	<input type="checkbox"/>	<input type="checkbox"/>	<input type="checkbox"/>	<input type="checkbox"/>	<input type="checkbox"/>
<input type="checkbox"/>	<input type="checkbox"/>	<input type="checkbox"/>	<input type="checkbox"/>	<input type="checkbox"/>	<input type="checkbox"/>	<input type="checkbox"/>	<input type="checkbox"/>	<input type="checkbox"/>	<input type="checkbox"/>
<input type="checkbox"/>	<input type="checkbox"/>	<input type="checkbox"/>	<input type="checkbox"/>	<input type="checkbox"/>	<input type="checkbox"/>	<input type="checkbox"/>	<input type="checkbox"/>	<input type="checkbox"/>	<input type="checkbox"/>
<input type="checkbox"/>	<input type="checkbox"/>	<input type="checkbox"/>	<input type="checkbox"/>	<input type="checkbox"/>	<input type="checkbox"/>	<input type="checkbox"/>	<input type="checkbox"/>	<input type="checkbox"/>	<input type="checkbox"/>
<input type="checkbox"/>	<input type="checkbox"/>	<input type="checkbox"/>	<input type="checkbox"/>	<input type="checkbox"/>	<input type="checkbox"/>	<input type="checkbox"/>	<input type="checkbox"/>	<input type="checkbox"/>	<input type="checkbox"/>
<input type="checkbox"/>	<input type="checkbox"/>	<input type="checkbox"/>	<input type="checkbox"/>	<input type="checkbox"/>	<input type="checkbox"/>	<input type="checkbox"/>	<input type="checkbox"/>	<input type="checkbox"/>	<input type="checkbox"/>
<input type="checkbox"/>	<input type="checkbox"/>	<input type="checkbox"/>	<input type="checkbox"/>	<input type="checkbox"/>	<input type="checkbox"/>	<input type="checkbox"/>	<input type="checkbox"/>	<input type="checkbox"/>	<input type="checkbox"/>
<input type="checkbox"/>	<input type="checkbox"/>	<input type="checkbox"/>	<input type="checkbox"/>	<input type="checkbox"/>	<input type="checkbox"/>	<input type="checkbox"/>	<input type="checkbox"/>	<input type="checkbox"/>	<input type="checkbox"/>
<input type="checkbox"/>	<input type="checkbox"/>	<input type="checkbox"/>	<input type="checkbox"/>	<input type="checkbox"/>	<input type="checkbox"/>	<input type="checkbox"/>	<input type="checkbox"/>	<input type="checkbox"/>	<input type="checkbox"/>
<input type="checkbox"/>	<input type="checkbox"/>	<input type="checkbox"/>	<input type="checkbox"/>	<input type="checkbox"/>	<input type="checkbox"/>	<input type="checkbox"/>	<input type="checkbox"/>	<input type="checkbox"/>	<input type="checkbox"/>
<input type="checkbox"/>	<input type="checkbox"/>	<input type="checkbox"/>	<input type="checkbox"/>	<input type="checkbox"/>	<input type="checkbox"/>	<input type="checkbox"/>	<input type="checkbox"/>	<input type="checkbox"/>	<input type="checkbox"/>
<input type="checkbox"/>	<input type="checkbox"/>	<input type="checkbox"/>	<input type="checkbox"/>	<input type="checkbox"/>	<input type="checkbox"/>	<input type="checkbox"/>	<input type="checkbox"/>	<input type="checkbox"/>	<input type="checkbox"/>
<input type="checkbox"/>	<input type="checkbox"/>	<input type="checkbox"/>	<input type="checkbox"/>	<input type="checkbox"/>	<input type="checkbox"/>	<input type="checkbox"/>	<input type="checkbox"/>	<input type="checkbox"/>	<input type="checkbox"/>
<input type="checkbox"/>	<input type="checkbox"/>	<input type="checkbox"/>	<input type="checkbox"/>	<input type="checkbox"/>	<input type="checkbox"/>	<input type="checkbox"/>	<input type="checkbox"/>	<input type="checkbox"/>	<input type="checkbox"/>
<input type="checkbox"/>	<input type="checkbox"/>	<input type="checkbox"/>	<input type="checkbox"/>	<input type="checkbox"/>	<input type="checkbox"/>	<input type="checkbox"/>	<input type="checkbox"/>	<input type="checkbox"/>	<input type="checkbox"/>
<input type="checkbox"/>	<input type="checkbox"/>	<input type="checkbox"/>	<input type="checkbox"/>	<input type="checkbox"/>	<input type="checkbox"/>	<input type="checkbox"/>	<input type="checkbox"/>	<input type="checkbox"/>	<input type="checkbox"/>
<input type="checkbox"/>	<input type="checkbox"/>	<input type="checkbox"/>	<input type="checkbox"/>	<input type="checkbox"/>	<input type="checkbox"/>	<input type="checkbox"/>	<input type="checkbox"/>	<input type="checkbox"/>	<input type="checkbox"/>
<input type="checkbox"/>	<input type="checkbox"/>	<input type="checkbox"/>	<input type="checkbox"/>	<input type="checkbox"/>	<input type="checkbox"/>	<input type="checkbox"/>	<input type="checkbox"/>	<input type="checkbox"/>	<input type="checkbox"/>
<input type="checkbox"/>	<input type="checkbox"/>	<input type="checkbox"/>	<input type="checkbox"/>	<input type="checkbox"/>	<input type="checkbox"/>	<input type="checkbox"/>	<input type="checkbox"/>	<input type="checkbox"/>	<input type="checkbox"/>
<input type="checkbox"/>	<input type="checkbox"/>	<input type="checkbox"/>	<input type="checkbox"/>	<input type="checkbox"/>	<input type="checkbox"/>	<input type="checkbox"/>	<input type="checkbox"/>	<input type="checkbox"/>	<input type="checkbox"/>
<input type="checkbox"/>	<input type="checkbox"/>	<input type="checkbox"/>	<input type="checkbox"/>	<input type="checkbox"/>	<input type="checkbox"/>	<input type="checkbox"/>	<input type="checkbox"/>	<input type="checkbox"/>	<input type="checkbox"/>
<input type="checkbox"/>	<input type="checkbox"/>	<input type="checkbox"/>	<input type="checkbox"/>	<input type="checkbox"/>	<input type="checkbox"/>	<input type="checkbox"/>	<input type="checkbox"/>	<input type="checkbox"/>	<input type="checkbox"/>
<input type="checkbox"/>	<input type="checkbox"/>	<input type="checkbox"/>	<input type="checkbox"/>	<input type="checkbox"/>	<input type="checkbox"/>	<input type="checkbox"/>	<input type="checkbox"/>	<input type="checkbox"/>	<input type="checkbox"/>
<input type="checkbox"/>	<input type="checkbox"/>	<input type="checkbox"/>	<input type="checkbox"/>	<input type="checkbox"/>	<input type="checkbox"/>	<input type="checkbox"/>	<input type="checkbox"/>	<input type="checkbox"/>	<input type="checkbox"/>
<input type="checkbox"/>	<input type="checkbox"/>	<input type="checkbox"/>	<input type="checkbox"/>	<input type="checkbox"/>	<input type="checkbox"/>	<input type="checkbox"/>	<input type="checkbox"/>	<input type="checkbox"/>	<input type="checkbox"/>
<input type="checkbox"/>	<input type="checkbox"/>	<input type="checkbox"/>	<input type="checkbox"/>	<input type="checkbox"/>	<input type="checkbox"/>	<input type="checkbox"/>	<input type="checkbox"/>	<input type="checkbox"/>	<input type="checkbox"/>
<input type="checkbox"/>	<input type="checkbox"/>	<input type="checkbox"/>	<input type="checkbox"/>	<input type="checkbox"/>	<input type="checkbox"/>	<input type="checkbox"/>	<input type="checkbox"/>	<input type="checkbox"/>	<input type="checkbox"/>
<input type="checkbox"/>	<input type="checkbox"/>	<input type="checkbox"/>	<input type="checkbox"/>	<input type="checkbox"/>	<input type="checkbox"/>	<input type="checkbox"/>	<input type="checkbox"/>	<input type="checkbox"/>	<input type="checkbox"/>
<input type="checkbox"/>	<input type="checkbox"/>	<input type="checkbox"/>	<input type="checkbox"/>	<input type="checkbox"/>	<input type="checkbox"/>	<input type="checkbox"/>	<input type="checkbox"/>	<input type="checkbox"/>	<input type="checkbox"/>
<input type="checkbox"/>	<input type="checkbox"/>	<input type="checkbox"/>	<input type="checkbox"/>	<input type="checkbox"/>	<input type="checkbox"/>	<input type="checkbox"/>	<input type="checkbox"/>	<input type="checkbox"/>	<input type="checkbox"/>
<input type="checkbox"/>	<input type="checkbox"/>	<input type="checkbox"/>	<input type="checkbox"/>	<input type="checkbox"/>	<input type="checkbox"/>	<input type="checkbox"/>	<input type="checkbox"/>	<input type="checkbox"/>	<input type="checkbox"/>
<input type="checkbox"/>	<input type="checkbox"/>	<input type="checkbox"/>	<input type="checkbox"/>	<input type="checkbox"/>	<input type="checkbox"/>	<input type="checkbox"/>	<input type="checkbox"/>	<input type="checkbox"/>	<input type="checkbox"/>
<input type="checkbox"/>	<input type="checkbox"/>	<input type="checkbox"/>	<input type="checkbox"/>	<input type="checkbox"/>	<input type="checkbox"/>	<input type="checkbox"/>	<input type="checkbox"/>	<input type="checkbox"/>	<input type="checkbox"/>
<input type="checkbox"/>	<input type="checkbox"/>	<input type="checkbox"/>	<input type="checkbox"/>	<input type="checkbox"/>	<input type="checkbox"/>	<input type="checkbox"/>	<input type="checkbox"/>	<input type="checkbox"/>	<input type="checkbox"/>
<input type="checkbox"/>	<input type="checkbox"/>	<input type="checkbox"/>	<input type="checkbox"/>	<input type="checkbox"/>	<input type="checkbox"/>	<input type="checkbox"/>	<input type="checkbox"/>	<input type="checkbox"/>	<input type="checkbox"/>
<input type="checkbox"/>	<input type="checkbox"/>	<input type="checkbox"/>	<input type="checkbox"/>	<input type="checkbox"/>	<input type="checkbox"/>	<input type="checkbox"/>	<input type="checkbox"/>	<input type="checkbox"/>	<input type="checkbox"/>
<input type="checkbox"/>	<input type="checkbox"/>	<input type="checkbox"/>	<input type="checkbox"/>	<input type="checkbox"/>	<input type="checkbox"/>	<input type="checkbox"/>	<input type="checkbox"/>	<input type="checkbox"/>	<input type="checkbox"/>
<input type="checkbox"/>	<input type="checkbox"/>	<input type="checkbox"/>	<input type="checkbox"/>	<input type="checkbox"/>	<input type="checkbox"/>	<input type="checkbox"/>	<input type="checkbox"/>	<input type="checkbox"/>	<input type="checkbox"/>
<input type="checkbox"/>	<input type="checkbox"/>	<input type="checkbox"/>	<input type="checkbox"/>	<input type="checkbox"/>	<input type="checkbox"/>	<input type="checkbox"/>	<input type="checkbox"/>	<input type="checkbox"/>	<input type="checkbox"/>
<input type="checkbox"/>	<input type="checkbox"/>	<input type="checkbox"/>	<input type="checkbox"/>	<input type="checkbox"/>	<input type="checkbox"/>	<input type="checkbox"/>	<input type="checkbox"/>	<input type="checkbox"/>	<input type="checkbox"/>
<input type="checkbox"/>	<input type="checkbox"/>	<input type="checkbox"/>	<input type="checkbox"/>	<input type="checkbox"/>	<input type="checkbox"/>	<input type="checkbox"/>	<input type="checkbox"/>	<input type="checkbox"/>	<input type="checkbox"/>
<input type="checkbox"/>	<input type="checkbox"/>	<input type="checkbox"/>	<input type="checkbox"/>	<input type="checkbox"/>	<input type="checkbox"/>	<input type="checkbox"/>	<input type="checkbox"/>	<input type="checkbox"/>	<input type="checkbox"/>
<input type="checkbox"/>	<input type="checkbox"/>	<input type="checkbox"/>	<input type="checkbox"/>	<input type="checkbox"/>	<input type="checkbox"/>	<input type="checkbox"/>	<input type="checkbox"/>	<input type="checkbox"/>	<input type="checkbox"/>
<input type="checkbox"/>	<input type="checkbox"/>	<input type="checkbox"/>	<input type="checkbox"/>	<input type="checkbox"/>	<input type="checkbox"/>	<input type="checkbox"/>	<input type="checkbox"/>	<input type="checkbox"/>	<input type="checkbox"/>
<input type="checkbox"/>	<input type="checkbox"/>	<input type="checkbox"/>	<input type="checkbox"/>	<input type="checkbox"/>	<input type="checkbox"/>	<input type="checkbox"/>	<input type="checkbox"/>	<input type="checkbox"/>	<input type="checkbox"/>
<input type="checkbox"/>	<input type="checkbox"/>	<input type="checkbox"/>	<input type="checkbox"/>	<input type="checkbox"/>	<input type="checkbox"/>	<input type="checkbox"/>	<input type="checkbox"/>	<input type="checkbox"/>	<input type="checkbox"/>
<input type="checkbox"/>	<input type="checkbox"/>	<input type="checkbox"/>	<input type="checkbox"/>	<input type="checkbox"/>	<input type="checkbox"/>	<input type="checkbox"/>	<input type="checkbox"/>	<input type="checkbox"/>	<input type="checkbox"/>
<input type="checkbox"/>	<input type="checkbox"/>	<input type="checkbox"/>	<input type="checkbox"/>	<input type="checkbox"/>	<input type="checkbox"/>	<input type="checkbox"/>	<input type="checkbox"/>	<input type="checkbox"/>	<input type="checkbox"/>
<input type="checkbox"/>	<input type="checkbox"/>	<input type="checkbox"/>	<input type="checkbox"/>	<input type="checkbox"/>	<input type="checkbox"/>	<input type="checkbox"/>	<input type="checkbox"/>	<input type="checkbox"/>	<input type="checkbox"/>
<input type="checkbox"/>	<input type="checkbox"/>	<input type="checkbox"/>	<input type="checkbox"/>	<input type="checkbox"/>	<input type="checkbox"/>	<input type="checkbox"/>	<input type="checkbox"/>	<input type="checkbox"/>	<input type="checkbox"/>
<input type="checkbox"/>	<input type="checkbox"/>	<input type="checkbox"/>	<input type="checkbox"/>	<input type="checkbox"/>	<input type="checkbox"/>	<input type="checkbox"/>	<input type="checkbox"/>	<input type="checkbox"/>	<input type="checkbox"/>
<input type="checkbox"/>	<input type="checkbox"/>	<input type="checkbox"/>	<input type="checkbox"/>	<input type="checkbox"/>	<input type="checkbox"/>	<input type="checkbox"/>	<input type="checkbox"/>	<input type="checkbox"/>	<input type="checkbox"/>
<input type="checkbox"/>	<input type="checkbox"/>	<input type="checkbox"/>	<input type="checkbox"/>	<input type="checkbox"/>	<input type="checkbox"/>	<input type="checkbox"/>	<input type="checkbox"/>	<input type="checkbox"/>	<input type="checkbox"/>
<input type="checkbox"/>	<input type="checkbox"/>	<input type="checkbox"/>	<input type="checkbox"/>	<input type="checkbox"/>	<input type="checkbox"/>	<input type="checkbox"/>	<input type="checkbox"/>	<input type="checkbox"/>	<input type="checkbox"/>
<input type="checkbox"/>	<input type="checkbox"/>	<input type="checkbox"/>	<input type="checkbox"/>	<input type="checkbox"/>	<input type="checkbox"/>	<input type="checkbox"/>	<input type="checkbox"/>	<input type="checkbox"/>	<input type="checkbox"/>
<input type="checkbox"/>	<input type="checkbox"/>	<input type="checkbox"/>	<input type="checkbox"/>	<input type="checkbox"/>	<input type="checkbox"/>	<input type="checkbox"/>	<input type="checkbox"/>	<input type="checkbox"/>	<input type="checkbox"/>
<input type="checkbox"/>	<input type="checkbox"/>	<input type="checkbox"/>	<input type="checkbox"/>	<input type="checkbox"/>	<input type="checkbox"/>	<input type="checkbox"/>	<input type="checkbox"/>	<input type="checkbox"/>	<input type="checkbox"/>
<input type="checkbox"/>	<input type="checkbox"/>	<input type="checkbox"/>	<input type="checkbox"/>	<input type="checkbox"/>	<input type="checkbox"/>	<input type="checkbox"/>	<input type="checkbox"/>	<input type="checkbox"/>	<input type="checkbox"/>
<input type="checkbox"/>	<input type="checkbox"/>	<input type="checkbox"/>	<input type="checkbox"/>	<input type="checkbox"/>	<input type="checkbox"/>	<input type="checkbox"/>	<input type="checkbox"/>	<input type="checkbox"/>	<input type="checkbox"/>
<input type="checkbox"/>	<input type="checkbox"/>	<input type="checkbox"/>	<input type="checkbox"/>	<input type="checkbox"/>	<input type="checkbox"/>	<input type="checkbox"/>	<input type="checkbox"/>	<input type="checkbox"/>	<input type="checkbox"/>
<input type="checkbox"/>	<input type="checkbox"/>	<input type="checkbox"/>	<input type="checkbox"/>	<input type="checkbox"/>	<input type="checkbox"/>	<input type="checkbox"/>	<input type="checkbox"/>	<input type="checkbox"/>	<input type="checkbox"/>
<input type="checkbox"/>	<input type="checkbox"/>	<input type="checkbox"/>	<input type="checkbox"/>	<input type="checkbox"/>	<input type="checkbox"/>	<input type="checkbox"/>	<input type="checkbox"/>	<input type="checkbox"/>	<input type="checkbox"/>
<input type="checkbox"/>	<input type="checkbox"/>	<input type="checkbox"/>	<input type="checkbox"/>	<input type="checkbox"/>	<input type="checkbox"/>	<input type="checkbox"/>	<input type="checkbox"/>	<input type="checkbox"/>	<input type="checkbox"/>
<input type="checkbox"/>	<input type="checkbox"/>	<input type="checkbox"/>	<input type="checkbox"/>	<input type="checkbox"/>	<input type="checkbox"/>	<input type="checkbox"/>	<input type="checkbox"/>	<input type="checkbox"/>	<input type="checkbox"/>
<input type="checkbox"/>	<input type="checkbox"/>	<input type="checkbox"/>	<input type="checkbox"/>	<input type="checkbox"/>	<input type="checkbox"/>	<input type="checkbox"/>	<input type="checkbox"/>	<input type="checkbox"/>	<input type="checkbox"/>
<input type="checkbox"/>	<input type="checkbox"/>	<input type="checkbox"/>	<input type="checkbox"/>	<input type="checkbox"/>	<input type="checkbox"/>	<input type="checkbox"/>	<input type="checkbox"/>	<input type="checkbox"/>	<input type="checkbox"/>
<input type="checkbox"/>	<input type="checkbox"/>	<input type="checkbox"/>	<input type="checkbox"/>	<input type="checkbox"/>	<input type="checkbox"/>	<input type="checkbox"/>	<input type="checkbox"/>	<input type="checkbox"/>	<input type="checkbox"/>
<input type="checkbox"/>	<input type="checkbox"/>	<input type="checkbox"/>	<input type="checkbox"/>	<input type="checkbox"/>	<input type="checkbox"/>	<input type="checkbox"/>	<input type="checkbox"/>	<input type="checkbox"/>	<input type="checkbox"/>
<input type="checkbox"/>	<input type="checkbox"/>	<input type="checkbox"/>	<input type="checkbox"/>	<input type="checkbox"/>	<input type="checkbox"/>	<input type="checkbox"/>	<input type="checkbox"/>	<input type="checkbox"/>	<input type="checkbox"/>
<input type="checkbox"/>	<input type="checkbox"/>	<input type="checkbox"/>	<input type="checkbox"/>	<input type="checkbox"/>	<input type="checkbox"/>	<input type="checkbox"/>	<input type="checkbox"/>	<input type="checkbox"/>	<input type="checkbox"/>
<input type="checkbox"/>	<input type="checkbox"/>	<input type="checkbox"/>	<input type="checkbox"/>	<input type="checkbox"/>	<input type="checkbox"/>	<input type="checkbox"/>	<input type="checkbox"/>	<input type="checkbox"/>	<input type="checkbox"/>
<input type="checkbox"/>	<input type="checkbox"/>	<input type="checkbox"/>	<input type="checkbox"/>	<input type="checkbox"/>	<input type="checkbox"/>	<input type="checkbox"/>	<input type="checkbox"/>	<input type="checkbox"/>	<input type="checkbox"/>
<input type="checkbox"/>	<input type="checkbox"/>	<input type="checkbox"/>	<input type="checkbox"/>	<input type="checkbox"/>	<input type="checkbox"/>	<input type="checkbox"/>	<input type="checkbox"/>	<input type="checkbox"/>	<input type="checkbox"/>
<input type="checkbox"/>	<input type="checkbox"/>	<input type="checkbox"/>	<input type="checkbox"/>	<input type="checkbox"/>	<input type="checkbox"/>	<input type="checkbox"/>	<input type="checkbox"/>	<input type="checkbox"/>	<input type="checkbox"/>
<input type="checkbox"/>	<input type="checkbox"/>	<input type="checkbox"/>	<input type="checkbox"/>	<input type="checkbox"/>	<input type="checkbox"/>	<input type="checkbox"/>	<input type="checkbox"/>	<input type="checkbox"/>	<input type="checkbox"/>
<input type="checkbox"/>	<input type="checkbox"/>	<input type="checkbox"/>	<input type="checkbox"/>	<input type="checkbox"/>	<input type="checkbox"/>	<input type="checkbox"/>	<input type="checkbox"/>	<input type="checkbox"/>	<input type="checkbox"/>
<input type="checkbox"/>	<input type="checkbox"/>	<input type="checkbox"/>	<input type="checkbox"/>	<input type="checkbox"/>	<input type="checkbox"/>	<input type="checkbox"/>	<input type="checkbox"/>	<input type="checkbox"/>	<input type="checkbox"/>
<input type="checkbox"/>	<input type="checkbox"/>	<input type="checkbox"/>	<input type="checkbox"/>	<input type="checkbox"/>	<input type="checkbox"/>	<input type="checkbox"/>	<input type="checkbox"/>	<input type="checkbox"/>	<input type="checkbox"/>
<input type="checkbox"/>	<input type="checkbox"/>	<input type="checkbox"/>	<input type="checkbox"/>	<input type="checkbox"/>	<input type="checkbox"/>	<input type="checkbox"/>	<input type="checkbox"/>	<input type="checkbox"/>	<input type="checkbox"/>
<input type="checkbox"/>	<input type="checkbox"/>	<input type="checkbox"/>	<input type="checkbox"/>	<input type="checkbox"/>	<input type="checkbox"/>	<input type="checkbox"/>	<input type="checkbox"/>	<input type="checkbox"/>	<input type="checkbox"/>
<input type="checkbox"/>	<input type="checkbox"/>	<input type="checkbox"/>	<input type="checkbox"/>	<input type="checkbox"/>	<input type="checkbox"/>	<input type="checkbox"/>	<input type="checkbox"/>	<input type="checkbox"/>	<input type="checkbox"/>
<input type="checkbox"/>	<input type="checkbox"/>	<input type="checkbox"/>	<input type="checkbox"/>	<input type="checkbox"/>	<input type="checkbox"/>	<input type="checkbox"/>	<input type="checkbox"/>	<input type="checkbox"/>	<input type="checkbox"/>
<input type="checkbox"/>	<input type="checkbox"/>	<input type="checkbox"/>	<input type="checkbox"/>	<input type="checkbox"/>	<input type="checkbox"/>	<input type="checkbox"/>	<input type="checkbox"/>	<input type="checkbox"/>	<input type="checkbox"/>
<input type="checkbox"/>	<input type="checkbox"/>	<input type="checkbox"/>	<input type="checkbox"/>	<input type="checkbox"/>	<input type="checkbox"/>	<input type="checkbox"/>	<input type="checkbox"/>	<input type="checkbox"/>	<input type="checkbox"/>
<input type="checkbox"/>	<input type="checkbox"/>	<input type="checkbox"/>	<input type="checkbox"/>	<input type="checkbox"/>	<input type="checkbox"/>	<input type="checkbox"/>	<input type="checkbox"/>	<input type="checkbox"/>	<input type="checkbox"/>
<input type="checkbox"/>	<input type="checkbox"/>	<input type="checkbox"/>	<input type="checkbox"/>	<input type="checkbox"/>	<input type="checkbox"/>	<input type="checkbox"/>	<input type="checkbox"/>	<input type="checkbox"/>	<input type="checkbox"/>
<input type="checkbox"/>	<input type="checkbox"/>	<input type="checkbox"/>	<input type="checkbox"/>	<input type="checkbox"/>	<input type="checkbox"/>	<input type="checkbox"/>	<input type="checkbox"/>	<input type="checkbox"/>	<input type="checkbox"/>
<input type="checkbox"/>	<input type="checkbox"/>	<input type="checkbox"/>	<input type="checkbox"/>	<input type="checkbox"/>	<input type="checkbox"/>	<input type="checkbox"/>	<input type="checkbox"/>	<input type="checkbox"/>	<input type="checkbox"/>
<input type="checkbox"/>	<input type="checkbox"/>	<input type="checkbox"/>	<input type="checkbox"/>	<input type="checkbox"/>	<input type="checkbox"/>	<input type="checkbox"/>	<input type="checkbox"/>	<input type="checkbox"/>	<input type="checkbox"/>
<input type="checkbox"/>	<input type="checkbox"/>	<input type="checkbox"/>	<input type="checkbox"/>	<input type="checkbox"/>	<input type="checkbox"/>	<input type="checkbox"/>	<input type="checkbox"/>	<input type="checkbox"/>	<input type="checkbox"/>
<input type="checkbox"/>	<input type="checkbox"/>	<input type="checkbox"/>	<input type="checkbox"/>	<input type="checkbox"/>	<input type="checkbox"/>	<input type="checkbox"/>	<input type="checkbox"/>	<input type="checkbox"/>	<input type="checkbox"/>
<input type="checkbox"/>	<input type="checkbox"/>	<input type="checkbox"/>	<input type="checkbox"/>	<input type="checkbox"/>	<input type="checkbox"/>	<input type="checkbox"/>	<input type="checkbox"/>	<input type="checkbox"/>	<input type="checkbox"/>
<input type="checkbox"/>	<input type="checkbox"/>	<input type="checkbox"/>	<input type="checkbox"/>	<input type="checkbox"/>	<input type="checkbox"/>	<input type="checkbox"/>	<input type="checkbox"/>	<input type="checkbox"/>	<input type="checkbox"/>
<input type="checkbox"/>	<input type="checkbox"/>	<input type="checkbox"/>	<input type="checkbox"/>	<input type="checkbox"/>	<input type="checkbox"/>	<input type="checkbox"/>	<input type="checkbox"/>	<input type="checkbox"/>	<input type="checkbox"/>
<input type="checkbox"/>	<input type="checkbox"/>	<input type="checkbox"/>	<input type="checkbox"/>	<input type="checkbox"/>	<input type="checkbox"/>	<input type="checkbox"/>	<input type="checkbox"/>	<input type="checkbox"/>	<input type="checkbox"/>
<input type="checkbox"/>	<input type="checkbox"/>	<input type="checkbox"/>	<input type="checkbox"/>	<input type="checkbox"/>	<input type="checkbox"/>	<input type="checkbox"/>	<input type="checkbox"/>	<input type="checkbox"/>	<input type="checkbox"/>
<input type="checkbox"/>	<input type="checkbox"/>	<input type="checkbox"/>	<input type="checkbox"/>	<input type="checkbox"/>	<input type="checkbox"/>	<input type="checkbox"/>	<input type="checkbox"/>	<input type="checkbox"/>	<input type="checkbox"/>
<input type="checkbox"/>	<input type="checkbox"/>	<input type="checkbox"/>	<input type="checkbox"/>	<input type="checkbox"/>	<input type="checkbox"/>	<input type="checkbox"/>	<input type="checkbox"/>	<input type="checkbox"/>	<input type="checkbox"/>
<input type="checkbox"/>	<input type="checkbox"/>	<input type="checkbox"/>	<input type="checkbox"/>	<input type="checkbox"/>	<input type="checkbox"/>	<input type="checkbox"/>	<input type="checkbox"/>	<input type="checkbox"/>	<input type="checkbox"/>
<input type="checkbox"/>	<input type="checkbox"/>	<input type="checkbox"/>	<input type="checkbox"/>	<input type="checkbox"/>	<input type="checkbox"/>	<input type="checkbox"/>	<input type="checkbox"/>	<input type="checkbox"/>	<input type="checkbox"/>
<input type="checkbox"/>	<input type="checkbox"/>	<input type="checkbox"/>	<input type="checkbox"/>	<input type="checkbox"/>	<input type="checkbox"/>	<input type="checkbox"/>	<input type="checkbox"/>	<input type="checkbox"/>	<input type="checkbox"/>
<input type="checkbox"/>	<input type="checkbox"/>	<input type="checkbox"/>	<input type="checkbox"/>	<input type="checkbox"/>	<input type="checkbox"/>	<input type="checkbox"/>	<input type="checkbox"/>	<input type="checkbox"/>	<input type="checkbox"/>
<input type="checkbox"/>	<input type="checkbox"/>	<input type="checkbox"/>	<input type="checkbox"/>	<input type="checkbox"/>	<input type="checkbox"/>	<input type="checkbox"/>	<input type="checkbox"/>	<input type="checkbox"/>	<input type="checkbox"/>
<input type="checkbox"/>	<input type="checkbox"/>	<input type="checkbox"/>	<input type="checkbox"/>	<input type="checkbox"/>	<input type="checkbox"/>	<input type="checkbox"/>	<input type="checkbox"/>	<input type="checkbox"/>	<input type="checkbox"/>
<input type="checkbox"/>	<input type="checkbox"/>	<input type="checkbox"/>	<input type="checkbox"/>	<input type="checkbox"/>	<input type="checkbox"/>	<input type="checkbox"/>	<input type="checkbox"/>	<input type="checkbox"/>	<input type="checkbox"/>
<input type="checkbox"/>	<input type="checkbox"/>	<input type="checkbox"/>	<input type="checkbox"/>	<input type="checkbox"/>	<input type="checkbox"/>	<input type="checkbox"/>	<input type="checkbox"/>	<input type="checkbox"/>	<input type="checkbox"/>
<input type="checkbox"/>	<input type="checkbox"/>	<input type="checkbox"/>	<input type="checkbox"/>	<input type="checkbox"/>	<input type="checkbox"/>	<input type="checkbox"/>	<input type="checkbox"/>	<input type="checkbox"/>	<input type="checkbox"/>
<input type="checkbox"/>	<input type="checkbox"/>	<input type="checkbox"/>	<input type="checkbox"/>	<input type="checkbox"/>	<input type="checkbox"/>	<input type="checkbox"/>	<input type="checkbox"/>	<input type="checkbox"/>	<input type="checkbox"/>
<input type="checkbox"/>	<input type="checkbox"/>	<input type="checkbox"/>	<input type="checkbox"/>	<input type="checkbox"/>	<input type="checkbox"/>	<input type="checkbox"/>	<input type="checkbox"/>	<input type="checkbox"/>	<input type="checkbox"/>
<input type="checkbox"/>	<input type="checkbox"/>	<input type="checkbox"/>	<input type="checkbox"/>	<input type="checkbox"/>	<input type="checkbox"/>	<input type="checkbox"/>	<input type="checkbox"/>	<input type="checkbox"/>	<input type="checkbox"/>
<input type="checkbox"/>	<input type="checkbox"/>	<input type="checkbox"/>	<input type="checkbox"/>	<input type="checkbox"/>	<input type="checkbox"/>	<input type="checkbox"/>	<input type="checkbox"/>	<input type="checkbox"/>	<input type="checkbox"/>
<input type="checkbox"/>	<input type="checkbox"/>	<input type="checkbox"/>	<input type="checkbox"/>	<input type="checkbox"/>	<input type="checkbox"/>	<input type="checkbox"/>	<input type="checkbox"/>	<input type="checkbox"/>	<input type="checkbox"/>
<input type="checkbox"/>	<input type="checkbox"/>	<input type="checkbox"/>	<input type="checkbox"/>	<input type="checkbox"/>	<input type="checkbox"/>	<input type="checkbox"/>	<input type="checkbox"/>	<input type="checkbox"/>	<input type="checkbox"/>
<input type="checkbox"/>	<input type="checkbox"/>	<input type="checkbox"/>	<input type="checkbox"/>	<input type="checkbox"/>	<input type="checkbox"/>	<input type="checkbox"/>	<input type="checkbox"/>	<input type="checkbox"/>	<input type="checkbox"/>
<input type="checkbox"/>	<input type="checkbox"/>	<input type="checkbox"/>	<input type="checkbox"/>	<input type="checkbox"/>	<input type="checkbox"/>	<input type="checkbox"/>	<input type="checkbox"/>	<input type="checkbox"/>	<input type="checkbox"/>
<input type="checkbox"/>	<input type="checkbox"/>	<input type="checkbox"/>	<input type="checkbox"/>	<input type="checkbox"/>	<input type="checkbox"/>	<input type="checkbox"/>	<input type="checkbox"/>	<input type="checkbox"/>	<input type="checkbox"/>
<input type="checkbox"/>	<input type="checkbox"/>	<input type="checkbox"/>	<input type="checkbox"/>	<input type="checkbox"/>	<input type="checkbox"/>	<input type="checkbox"/>	<input type="checkbox"/>	<input type="checkbox"/>	<input type="checkbox"/>
<input type="checkbox"/>	<input type="checkbox"/>	<input type="checkbox"/>	<input type="checkbox"/>	<input type="checkbox"/>	<input type="checkbox"/>	<input type="checkbox"/>	<input type="checkbox"/>	<input type="checkbox"/>	<input type="checkbox"/>
<input type="checkbox"/>	<input type="checkbox"/>	<input type="checkbox"/>	<input type="checkbox"/>	<input type="checkbox"/>	<input type="checkbox"/>	<input type="checkbox"/>	<input type="checkbox"/>	<input type="checkbox"/>	<input type="checkbox"/>
<input type="checkbox"/>	<input type="checkbox"/>	<input type="checkbox"/>	<input type="checkbox"/>	<input type="checkbox"/>	<input type="checkbox"/>	<input type="checkbox"/>	<input type="checkbox"/>	<input type="checkbox"/>	<input type="checkbox"/>
<input type="checkbox"/>									

## Inspection and maintenance

<b>Inspection plan for recurring inspections of the Hailo PARTNER H-50.2 fall arrester.</b>	
	Inspection
	Date (month/year)
	Result
1. Hailo Partner H-50.2 fall arrester	General condition, check for damage, corrosion, soiling
2. Fall arrester housing	Technical condition
3. Slider on the right	Technical condition, function
4. Guide rollers	Ease of motion, technical condition
5. Twist lock pin	Technical condition
6. Brake lever	Ease of movement, functional surfaces, technical condition
7. Brake lever (wear points)	Inspection of the thickness, min. >0.05 mm
8. Brake lever (return spring)	Effect, condition
9. Screw connections	Technical condition, preload force
10. Cylindrical pin (brake lever)	Fit, condition
11. Magnets	Technical condition (corrosion, soiling)
12. Shackle	Pin retainer (adhesive)
13. Transverse axes	Function, ease of movement
14. Release mechanism	Function, ease of movement
15. Energy absorbing lanyard BFD-50-136	Condition, seams, shoulder strap (blue belt)
16. Energy absorbing lanyard BFD-50-136	Condition and shrink sleeve packaging
17. Snap hooks	Condition, function, hook safety
18. Original markings	Series number, type specification etc. easy to read
19. Fall arrester functional test	Use on the fall-arrest system
20. Usage period of the BFD-50-136	Usage period elapsed?
21. Hailo PARTNER H-50.2 fall arrester inspection tag	Inspection tag issued



# Inspection and maintenance

Results									
6. Inspection		7. Inspection		8. Inspection		9. Inspection		10. inspection	
/		/		/		/		/	
OK	Not OK	OK	Not OK	OK	Not OK	OK	Not OK	OK	Not OK
<input type="checkbox"/>	<input type="checkbox"/>	<input type="checkbox"/>	<input type="checkbox"/>	<input type="checkbox"/>	<input type="checkbox"/>	<input type="checkbox"/>	<input type="checkbox"/>	<input type="checkbox"/>	<input type="checkbox"/>
<input type="checkbox"/>	<input type="checkbox"/>	<input type="checkbox"/>	<input type="checkbox"/>	<input type="checkbox"/>	<input type="checkbox"/>	<input type="checkbox"/>	<input type="checkbox"/>	<input type="checkbox"/>	<input type="checkbox"/>
<input type="checkbox"/>	<input type="checkbox"/>	<input type="checkbox"/>	<input type="checkbox"/>	<input type="checkbox"/>	<input type="checkbox"/>	<input type="checkbox"/>	<input type="checkbox"/>	<input type="checkbox"/>	<input type="checkbox"/>
<input type="checkbox"/>	<input type="checkbox"/>	<input type="checkbox"/>	<input type="checkbox"/>	<input type="checkbox"/>	<input type="checkbox"/>	<input type="checkbox"/>	<input type="checkbox"/>	<input type="checkbox"/>	<input type="checkbox"/>
<input type="checkbox"/>	<input type="checkbox"/>	<input type="checkbox"/>	<input type="checkbox"/>	<input type="checkbox"/>	<input type="checkbox"/>	<input type="checkbox"/>	<input type="checkbox"/>	<input type="checkbox"/>	<input type="checkbox"/>
<input type="checkbox"/>	<input type="checkbox"/>	<input type="checkbox"/>	<input type="checkbox"/>	<input type="checkbox"/>	<input type="checkbox"/>	<input type="checkbox"/>	<input type="checkbox"/>	<input type="checkbox"/>	<input type="checkbox"/>
<input type="checkbox"/>	<input type="checkbox"/>	<input type="checkbox"/>	<input type="checkbox"/>	<input type="checkbox"/>	<input type="checkbox"/>	<input type="checkbox"/>	<input type="checkbox"/>	<input type="checkbox"/>	<input type="checkbox"/>
<input type="checkbox"/>	<input type="checkbox"/>	<input type="checkbox"/>	<input type="checkbox"/>	<input type="checkbox"/>	<input type="checkbox"/>	<input type="checkbox"/>	<input type="checkbox"/>	<input type="checkbox"/>	<input type="checkbox"/>
<input type="checkbox"/>	<input type="checkbox"/>	<input type="checkbox"/>	<input type="checkbox"/>	<input type="checkbox"/>	<input type="checkbox"/>	<input type="checkbox"/>	<input type="checkbox"/>	<input type="checkbox"/>	<input type="checkbox"/>
<input type="checkbox"/>	<input type="checkbox"/>	<input type="checkbox"/>	<input type="checkbox"/>	<input type="checkbox"/>	<input type="checkbox"/>	<input type="checkbox"/>	<input type="checkbox"/>	<input type="checkbox"/>	<input type="checkbox"/>
<input type="checkbox"/>	<input type="checkbox"/>	<input type="checkbox"/>	<input type="checkbox"/>	<input type="checkbox"/>	<input type="checkbox"/>	<input type="checkbox"/>	<input type="checkbox"/>	<input type="checkbox"/>	<input type="checkbox"/>
<input type="checkbox"/>	<input type="checkbox"/>	<input type="checkbox"/>	<input type="checkbox"/>	<input type="checkbox"/>	<input type="checkbox"/>	<input type="checkbox"/>	<input type="checkbox"/>	<input type="checkbox"/>	<input type="checkbox"/>
<input type="checkbox"/>	<input type="checkbox"/>	<input type="checkbox"/>	<input type="checkbox"/>	<input type="checkbox"/>	<input type="checkbox"/>	<input type="checkbox"/>	<input type="checkbox"/>	<input type="checkbox"/>	<input type="checkbox"/>
<input type="checkbox"/>	<input type="checkbox"/>	<input type="checkbox"/>	<input type="checkbox"/>	<input type="checkbox"/>	<input type="checkbox"/>	<input type="checkbox"/>	<input type="checkbox"/>	<input type="checkbox"/>	<input type="checkbox"/>
<input type="checkbox"/>	<input type="checkbox"/>	<input type="checkbox"/>	<input type="checkbox"/>	<input type="checkbox"/>	<input type="checkbox"/>	<input type="checkbox"/>	<input type="checkbox"/>	<input type="checkbox"/>	<input type="checkbox"/>
<input type="checkbox"/>	<input type="checkbox"/>	<input type="checkbox"/>	<input type="checkbox"/>	<input type="checkbox"/>	<input type="checkbox"/>	<input type="checkbox"/>	<input type="checkbox"/>	<input type="checkbox"/>	<input type="checkbox"/>
<input type="checkbox"/>	<input type="checkbox"/>	<input type="checkbox"/>	<input type="checkbox"/>	<input type="checkbox"/>	<input type="checkbox"/>	<input type="checkbox"/>	<input type="checkbox"/>	<input type="checkbox"/>	<input type="checkbox"/>
<input type="checkbox"/>	<input type="checkbox"/>	<input type="checkbox"/>	<input type="checkbox"/>	<input type="checkbox"/>	<input type="checkbox"/>	<input type="checkbox"/>	<input type="checkbox"/>	<input type="checkbox"/>	<input type="checkbox"/>
<input type="checkbox"/>	<input type="checkbox"/>	<input type="checkbox"/>	<input type="checkbox"/>	<input type="checkbox"/>	<input type="checkbox"/>	<input type="checkbox"/>	<input type="checkbox"/>	<input type="checkbox"/>	<input type="checkbox"/>
<input type="checkbox"/>	<input type="checkbox"/>	<input type="checkbox"/>	<input type="checkbox"/>	<input type="checkbox"/>	<input type="checkbox"/>	<input type="checkbox"/>	<input type="checkbox"/>	<input type="checkbox"/>	<input type="checkbox"/>
<input type="checkbox"/>	<input type="checkbox"/>	<input type="checkbox"/>	<input type="checkbox"/>	<input type="checkbox"/>	<input type="checkbox"/>	<input type="checkbox"/>	<input type="checkbox"/>	<input type="checkbox"/>	<input type="checkbox"/>
<input type="checkbox"/>	<input type="checkbox"/>	<input type="checkbox"/>	<input type="checkbox"/>	<input type="checkbox"/>	<input type="checkbox"/>	<input type="checkbox"/>	<input type="checkbox"/>	<input type="checkbox"/>	<input type="checkbox"/>
<input type="checkbox"/>	<input type="checkbox"/>	<input type="checkbox"/>	<input type="checkbox"/>	<input type="checkbox"/>	<input type="checkbox"/>	<input type="checkbox"/>	<input type="checkbox"/>	<input type="checkbox"/>	<input type="checkbox"/>
<input type="checkbox"/>	<input type="checkbox"/>	<input type="checkbox"/>	<input type="checkbox"/>	<input type="checkbox"/>	<input type="checkbox"/>	<input type="checkbox"/>	<input type="checkbox"/>	<input type="checkbox"/>	<input type="checkbox"/>
<input type="checkbox"/>	<input type="checkbox"/>	<input type="checkbox"/>	<input type="checkbox"/>	<input type="checkbox"/>	<input type="checkbox"/>	<input type="checkbox"/>	<input type="checkbox"/>	<input type="checkbox"/>	<input type="checkbox"/>
<input type="checkbox"/>	<input type="checkbox"/>	<input type="checkbox"/>	<input type="checkbox"/>	<input type="checkbox"/>	<input type="checkbox"/>	<input type="checkbox"/>	<input type="checkbox"/>	<input type="checkbox"/>	<input type="checkbox"/>
<input type="checkbox"/>	<input type="checkbox"/>	<input type="checkbox"/>	<input type="checkbox"/>	<input type="checkbox"/>	<input type="checkbox"/>	<input type="checkbox"/>	<input type="checkbox"/>	<input type="checkbox"/>	<input type="checkbox"/>

# Inspection and maintenance

## 8.5 Inspection log: Hailo PARTNER H-50.2

Guided Fall arrester Hailo PARTNER H-50.2	
Manufacturing number of fall arrester	
Year of manufacture	
Date of commissioning	

Log	1. Inspection		2. Inspection	
Type of inspection	Recurring inspection	<input type="checkbox"/>	Recurring inspection	<input type="checkbox"/>
	Repair	<input type="checkbox"/>	Repair	<input type="checkbox"/>
Repairs performed, comment				
Inspected and documented on				
Inspection result	OK	<input type="checkbox"/>	OK	<input type="checkbox"/>
	Not OK	<input type="checkbox"/>	Not OK	<input type="checkbox"/>
Next inspection date				
Inspector and company				
Signature				

Additional comments

## Inspection and maintenance

Guided Fall arrester Hailo PARTNER H-50.2	
Manufacturing number of fall arrester	
Year of manufacture	
Date of commissioning	

Log	3. Inspection		4. Inspection	
Type of inspection	Recurring inspection	<input type="checkbox"/>	Recurring inspection	<input type="checkbox"/>
	Repair	<input type="checkbox"/>	Repair	<input type="checkbox"/>
Repairs performed, comment				
Inspected and documented on				
Inspection result	OK	<input type="checkbox"/>	OK	<input type="checkbox"/>
	Not OK	<input type="checkbox"/>	Not OK	<input type="checkbox"/>
Next inspection date				
Inspector and company				
Signature				

Additional comments

## Inspection and maintenance

Guided Fall arrester Hailo PARTNER H-50.2	
Manufacturing number of fall arrester	
Year of manufacture	
Date of commissioning	

Log	5. Inspection		6. Inspection	
Type of inspection	Recurring inspection	<input type="checkbox"/>	Recurring inspection	<input type="checkbox"/>
	Repair	<input type="checkbox"/>	Repair	<input type="checkbox"/>
Repairs performed, comment				
Inspected and documented on				
Inspection result	OK	<input type="checkbox"/>	OK	<input type="checkbox"/>
	Not OK	<input type="checkbox"/>	Not OK	<input type="checkbox"/>
Next inspection date				
Inspector and company				
Signature				

Additional comments

# Inspection and maintenance

Guided Fall arrester Hailo PARTNER H-50.2	
Manufacturing number of fall arrester	
Year of manufacture	
Date of commissioning	

Log	7. Inspection		8. Inspection	
Type of inspection	Recurring inspection	<input type="checkbox"/>	Recurring inspection	<input type="checkbox"/>
	Repair	<input type="checkbox"/>	Repair	<input type="checkbox"/>
Repairs performed, comment				
Inspected and documented on				
Inspection result	OK	<input type="checkbox"/>	OK	<input type="checkbox"/>
	Not OK	<input type="checkbox"/>	Not OK	<input type="checkbox"/>
Next inspection date				
Inspector and company				
Signature				

Additional comments

## Inspection and maintenance

Guided Fall arrester Hailo PARTNER H-50.2	
Manufacturing number of fall arrester	
Year of manufacture	
Date of commissioning	

Log	9. Inspection		10. Inspection	
Type of inspection	Recurring inspection	<input type="checkbox"/>	Recurring inspection	<input type="checkbox"/>
	Repair	<input type="checkbox"/>	Repair	<input type="checkbox"/>
Repairs performed, comment				
Inspected and documented on				
Inspection result	OK	<input type="checkbox"/>	OK	<input type="checkbox"/>
	Not OK	<input type="checkbox"/>	Not OK	<input type="checkbox"/>
Next inspection date				
Inspector and company				
Signature				

Additional comments

## 8.6 Replacement log: energy absorbing lanyard (every 8 years)

### **i** NOTE

The energy absorbing lanyard BFD-50-136 may only be replaced by the manufacturer. The energy absorbing lanyard data must be entered by the manufacturer and replacement must be documented below.

- Replace energy absorbing lanyard and shackle
- Assemble shackle pin with adhesive

Energy absorbing lanyard BFD-50-136		
Production number (see nameplate)		
Year of manufacture		
Date of purchase		
Date of first use		
Expiry date		
Log	1. Replacement	2. Replacement
Date:		
New production number:		
Expiry date:		
Person responsible:		
Signature:		
Comments:		
Log	3. Replacement	4. Replacement
Date:		
New production number:		
Expiry date:		
Person responsible:		
Signature:		
Comments:		

## 9 Appendix

### 9.1 EU-Declaration of Conformity

#### EU-Konformitätserklärung EU-Declaration of Conformity



Der Hersteller oder sein in der Gemeinschaft niedergelassener Bevollmächtigter:  
*The manufacturer or his authorised representative established within the company:*

Hailo Wind Systems GmbH & Co. KG  
Kalteiche-Ring 18  
35708 Haiger  
Deutschland · Germany

erklärt hiermit in alleiniger Verantwortung, dass das auf den Folgeseiten beschriebene mitlaufende Auffängergerät einschließlich fester Führung „System H-50.2“ den einschlägigen Harmonisierungsrechtsvorschriften der Verordnung (EU) 2016/425 sowie der harmonisierten Norm EN 353-1:2014 + A1:2017 (DIN EN 353-1:2018) entspricht.

*hereby declares in sole responsibility that the guided type fall arrester including a rigid anchor line „H-50.2 System“ described on the following pages complies with the relevant harmonization legislation Regulation (EU) 2016/425 as well as the harmonized standard EN 353-1: 2014 + A1: 2017 (DIN EN 353-1: 2018).*

Die notifizierte Stelle / *The notified body*  
DEKRA Testing and Certification GmbH  
Handwerkstraße 15, 70565 Stuttgart, Germany  
Certification Body Address:  
Dinnendahlstraße 9, 44809 Bochum  
Deutschland / Germany

0158, Europäisch notifizierte Stelle / *Notified Body of the EU*

hat die EU-Baumusterprüfung gemäß „Modul B“ durchgeführt und die EU-Baumusterprüfbescheinigung ausgestellt.  
*has carried out the EU type examination according to „Module B“ and the EU type examination certificate issued.*

#### ZP/B173/22

Die PSA unterliegt den Konformitätsbewertungsverfahren Modul C2 unter Überwachung der notifizierten Stelle Dekra Testing and Certification GmbH mit der Kennnummer 0158.  
*The PPE is subject to the conformity assessment procedure in accordance with „Module C2“ under the supervision of the notified body Dekra Testing and Certification GmbH with the identification no. 0158.*

Haiger, 28.11.2022  
Ort, Datum / *Place, Date*

  
Unterschrift der bevollmächtigte Person  
*Signature of authorized person (Johannes Weg, executive director)*



## 9.2 UK Declaration of Conformity



### Declaration of Conformity In accordance with UK Government guidance

The manufacturer or his authorised representative established within the company:

**Hailo Wind Systems GmbH & Co. KG**  
**Kalteiche-Ring 18**  
**D-35708 Haiger**  
**Germany**

hereby declares in sole responsibility, that the guided type fall arrester including rigid anchor line „H-50.2 System“ describes in the following pages complies with the provisions of the relevant UK designated standard BS EN 353-1:2014+A1:2017 as well as the equivalent EU harmonised standard EN 353-1:2014+A1:2017

The Object of the declaration described above is in conformity with the relevant UK Statutory instruments (and their amendments): Regulation 2016/425 on Personal protective equipment as brought into UK Law and amended.

The notified body  
DEKRA Testing and Certification GmbH  
Handwerkstraße 15, 70565 Stuttgart, Germany  
Certification Body Address:  
Dinnendahlstraße 9, 44809 Bochum  
Identification no. 0158

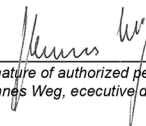
has carried out the EU type examination in accordance with „Module B“ and issued in

#### EU-Type Examination Certificate No. ZP/B173/22

The PPE is subject to the conformity assessment procedure in accordance with „Module C2“  
(Declaration of Conformity to type based on internal production control plus supervised product checks at random intervals) under the supervision of the notified body  
DEKRA Testing and Certification GmbH with the identification no. 0158.

Haiger, 28. November 2022

Place, Date



Signature of authorized person  
(Johannes Weg, executive director)

## 9.3 EU type examination certificate

**DEKRA**

TRANSLATION

**(1) EU-Type Examination Certificate**  
according to Module B Paragraph 6.1 of PPE Regulation (EU) 2016/425

(2) Regulation of the European Parliament and of the Council of 9 March 2016 relating to personal protective equipment (PPE) - Regulation (EU) 2016/425

(3) No. of EU-Type Examination Certificate: **ZP/B173/22** replaces ZP/B036/21

(4) Product: **Guided-type fall arrester including a rigid anchor line**  
Type: **Hailo PARTNER H-50.2**

(5) Manufacturer: **Hailo Wind Systems GmbH & Co. KG**

(6) Address: **Kalteiche-Ring 18, 35708 Haiger, Germany**

(7) Risk category: **III**

(8) The design and construction of this personal protective equipment and any acceptable variation thereto are specified in the appendix to this EU type-examination certificate.

(9) The certification body of DEKRA Testing and Certification GmbH, Notified Body No. 0158 according to Chapter V of Regulation (EU) 2016/425 of 9 March 2016, certifies that this personal protective equipment has been found to comply with the essential Health and Safety Requirements given in Annex II to the Regulation. The evaluation results are recorded in report PB 22-194. Other possibly applicable Union legislations applicable to the specified personal protective equipment have not been taken into account in this EU-type examination certificate.

(10) The essential Health and Safety Requirements are assured in consideration of  
**DIN EN 353-1:2018**

(11) This EU type-examination certificate relates only to the design, examination and tests of the specified personal protective equipment in accordance to Regulation (EU) 2016/425. For category III personal protective equipment, this EU type-examination certificate may only be used in conjunction with one of the conformity assessment procedures referred to Article 19 (c).

(12) When applying the CE Marking according to Article 16 and 17 of Regulation (EU) 2016/425 to the products that conform to the types examined, the client is obliged to add, in accordance with the attached pattern, the identification number of the Notified Body engaged in the conformity assessment according to Module C2 or D.  
Furthermore, the manufacturer is obliged to issue an EU declaration of conformity in accordance with Article 15 of Regulation (EU) 2016/425 and to enclose it with the personal protective equipment, or to indicate the Internet address in the manual and in the instructions in Annex II, point 1.4., at which the EU declaration of conformity can be accessed.

(13) This EU-Type Examination Certificate is valid until 2027-11-27.

DEKRA Testing and Certification GmbH  
Bochum, 2022-11-28

Signed: Krökel  
Managing director

We confirm the correctness of the translation from the German original. In the case of arbitration only the German wording shall be valid and binding.

Krökel  
Managing director

Page 1 of 3 of ZP/B173/22, 342826900  
This certificate may only be published in its entirety and without any change.  
DEKRA Testing and Certification GmbH, Handwerkstraße 15, 70566 Stuttgart, Germany  
Certification Body: Dinnordstraße 9, 44803 Bochum, Germany  
Telephone: +49 254 3695-100, Fax: +49 254 3695-110, DTC-Certification-Body@dekra.com

Notes

**Hailo Wind Systems GmbH & Co. KG**

Kalteiche-Ring 18 • D-35708 Haiger, Germany

Phone +49 2773 82-1410 • Fax: +49 2773 82-1561

E-mail: [info@hailo-windsystems.com](mailto:info@hailo-windsystems.com) • [www.hailo-windsystems.com](http://www.hailo-windsystems.com)